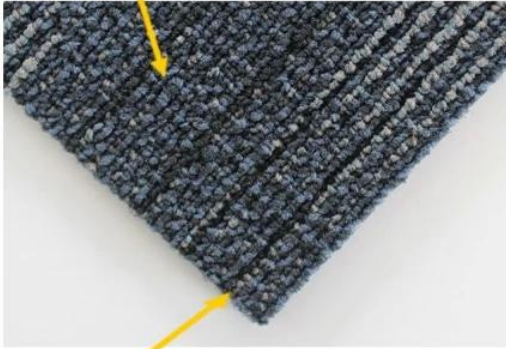


Item	Pile Material	Pile Height	Pile Weight	Back Material	Size
DK-NC50L	Nylon	2.5-5mm	560g/m2, 580g/m2	PVC	50x50cm
DK-PC50L	Polypropylene	3.5mm	560g/m2, 630g/m2	PVC	50x50cm

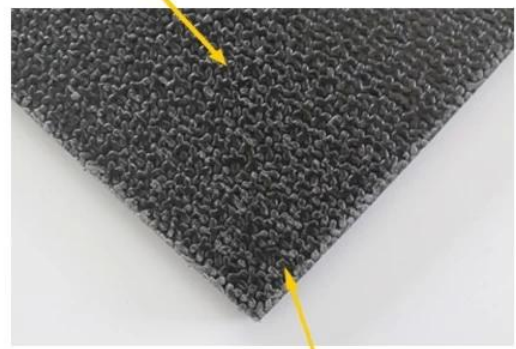
DK-NC50L: Nylon Carpet Tile

100% Polyamide / Nylon 6.6 Pile



Easy to clean. Dry quickly & Good wearability

High quality & Slip-resistant PVC backing



Waterproof. Oil-proof & Stain resistance



- Carpet Tile have been used in many commercial applications
- They can be replaced easily instead of having to clean the whole room
- Antistatic, Anti-bacterial, Mildew proof



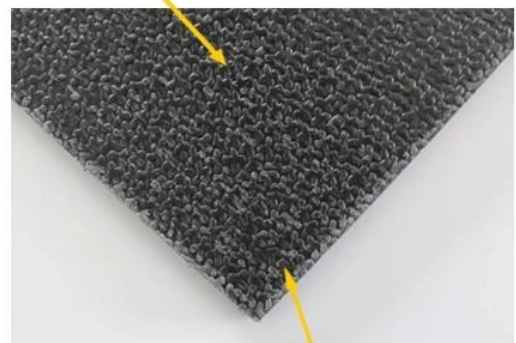
DK-PC50L: Polypropylene Carpet Tile

100% Polypropylene Loop Pile



Environmentally friendly & Colorfast

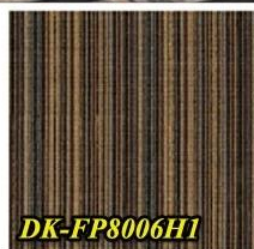
High quality & Slip-resistant PVC backing



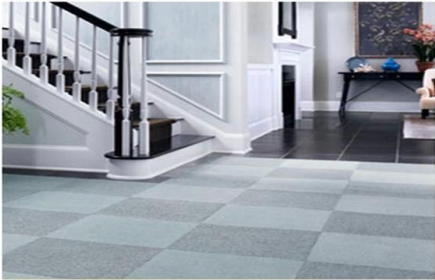
Waterproof. Oil-proof & Stain resistance



- Easy to be replaced
- Antistatic, Anti-bacterial, Mildew proof
- Could be installed in both commercial and residential spaces
- With many styles and colors for choice



Carpet Tile for Home Use:



Carpet Tile for Office Use:



Carpet Tile for Commercial Use:



Call

(86) 755 82132292

Or

Enquiry Now

for more style