

Make Your Own LOGO Mat



Pick the Colors

Measure the Size

Then go ahead >>



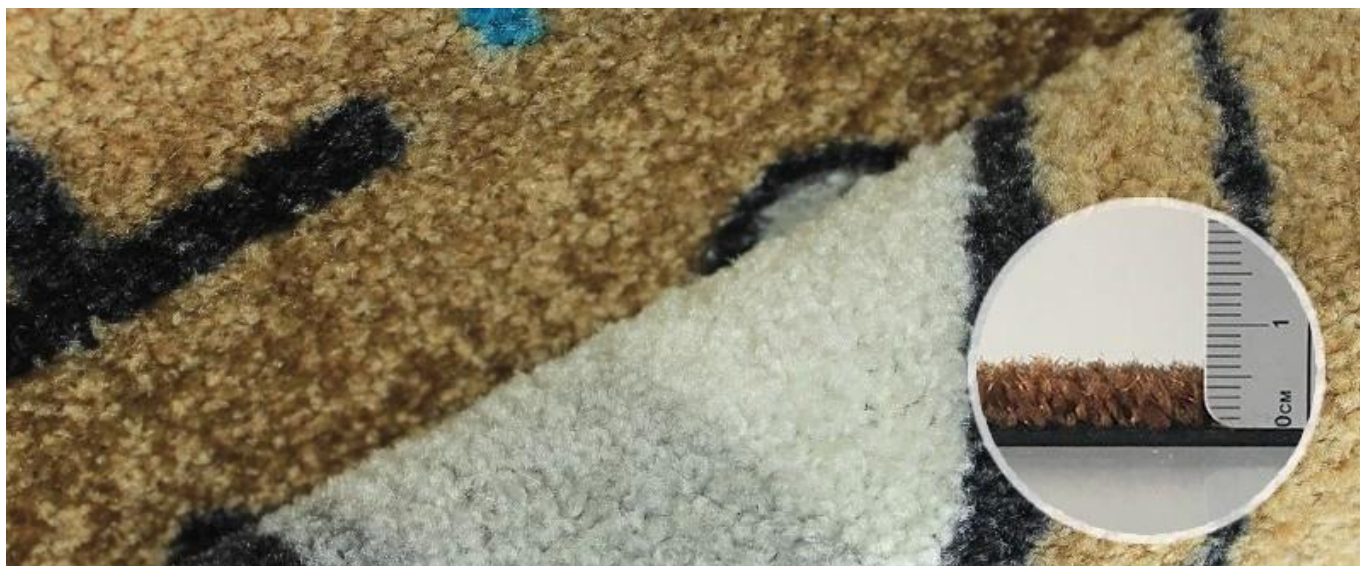
- > 0 0 0 0 0 0 0 0 0 0 0 0 0 0 0 0
- > 0 0 0 0 0 0 0 0 0 0 0 0 0 0 0 0
- > 0 0 0 0 0 0 0 0 0 0 0 0 0 0 0 0
- > 0 0 0 0 0 0 0 0 0 0 0 0 0 0 0 0
- > 0 0 0 0 0 0 0 0 0 0 0 0 0 0 0 0



- > 0 0 0 **DK-2450** 3 0 0 / 450gsm 0 0 + 2mm / 2000gsm 0 0 0 0
- 0 0 0 0 0 0 0 0 0 0 0 0 0 0 0 0



- > 0 0 0 **DK-2000** 4 0 0 / 600gsm 0 0 + 2mm / 2000gsm 0 0 0 0
- 0 0 0 0 0 0 0 0 0 0 0 0 0 0 0 0



> 色布 DK-2200 700gsm+ 2mm / 2000gsm

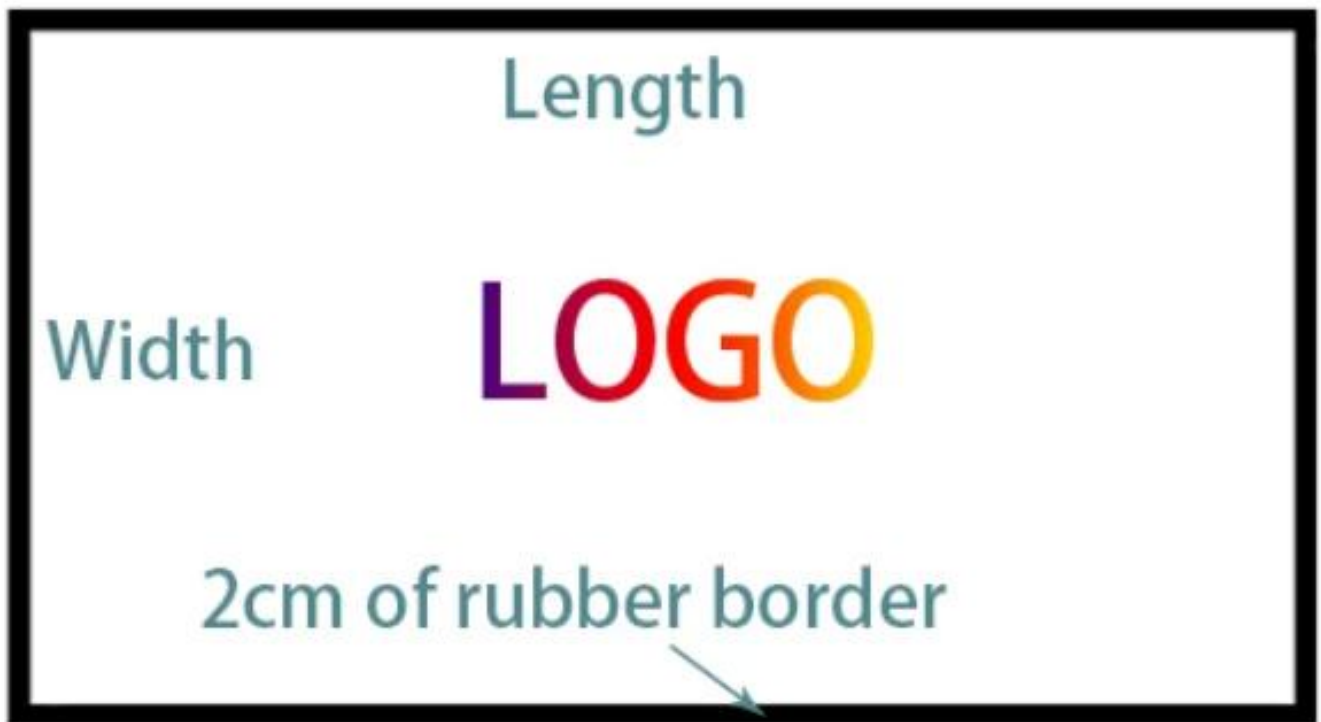
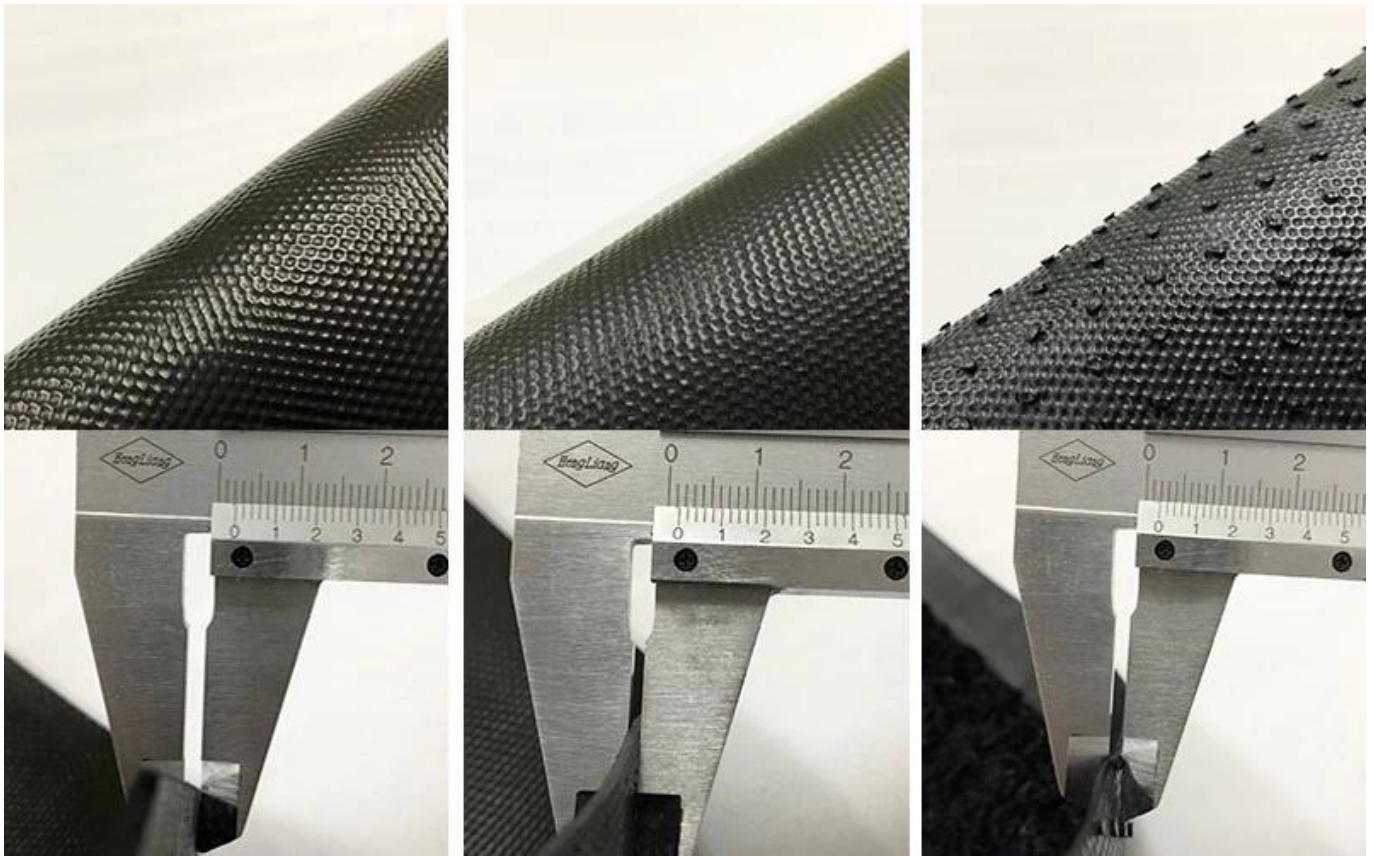
色布 色布 色布 色布 色布 色布



> 色布 DK-2300 700 / 950gsm+ 2mm / 2000gsm

色布 色布 色布 色布





□□□□ 2□

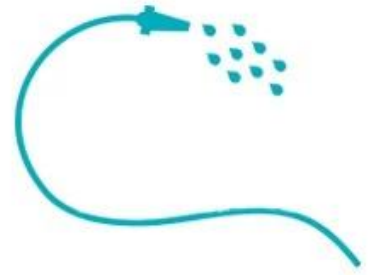
□□□□□□□□

□□□□□ 40x60cm □ 46x74cm □ 50x70cm □ 50x80cm □ 60x90cm □

80x120cm □ 120x180cm □□□□□□□□



1.□□□□ 2.□□□□3□ □□ □□Cleaning 4.□□□□□□



Raw Material



Tufting



Artwork



Dye



Drying



Rinsing



Fixation



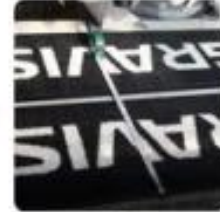
Printing



Cutting



Vulcanization



QC



Packing



SHENZHEN DICTUM HOUSEWARE PRODUCTS CO., LTD
RM 607-608, NINGBO BUILDING ELECTRICAL BLDG. #7 BINGJIA RD, SHENZHEN, CHINA 51803

The following SAMPLES were submitted and identified on behalf of the client as:

Sample Name: W/2X PRINTED MAT WITH RUBBER BACKING
SGS Ref No.: GZHT12100646
Material: W/2X-RUBBER
Spec: W-1000M
Manufacturer: SHENZHEN DICTUM HOUSEWARE PRODUCTS CO., LTD
Test Performed: Selected based on requested by applicant
Date of Request: Oct. 11, 2012
Test Period: Oct. 11, 2012 to Oct. 16, 2012

Test Method: Please refer to the following legend:
*****To be continued*****

Signed for and on behalf of
SGS-CSTC Ltd.

Name: Authorized Representative



Test Information:

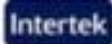
Sample description: See photo

Lab environment condition: 23±2°C, 50%RH±5%

No.	Test Item	Test method	Test condition	Test result
1	Water absorption	ASTM D 1570-02 (2008) Procedure A	Specimen: 200±0.04mm Green Environmental condition: 23±2°C, 50%	0.044g/cm ² (See table 1)

- Note: 1. Water absorption, g/m²; 2. Final mass, ambient temperature, 24±0.5°C
3. All test specimens were cut from the sample.
4. The standard was carried out by a SGS laboratory.

Photo:



Test Report

Number: GZHT00870223

Tests Conducted (As Requested By The Applicant)

1. Color Fastness To Washing (AATCC 61-2011), Test No. 24, 45 Minutes Mechanical Wash At 120°F In 0.15% AATCC WOB Detergent Solution With 50 Steel Balls

Color Change	4
Color Staining	4.5
-Acetate	4.5
-Cotton	4
-Nylon	4.5
-Polyester	4.5
-Acrylic	4.5
-Wool	4.5

2. Color Fastness To Crocking (AATCC 8-2007)

Dry	4.5
Wet	4.5

3. Color Fastness To Light (AATCC 16-2004, Option 3, Xenon-Arc Lamp)

20 Hours Exposure Grade	4
-------------------------	---

SP / Sample

Page 3 of 4



Test Report

Number: GZHT00870223

Tests Conducted (As Requested By The Applicant)

4. Flammability Test For Carpets And Rugs (US CPSC 16 CFR Part 1631)

The Apparatus And Methods Of Testing Were Those Described In 16 CFR Part 1632 Standard For The Surface Flammability Of Small Carpets And Rugs (FF2-72).

Requirement

- (1) Test Criterion:
The Charred Portion Does Not Extend To Within One Inch Of The Edge Of The Hole In The Flaming Frame At Any Point.
(2) Acceptance Criterion:
At Least 7 Of The 8 Specimens Must Meet The Test Criterion For The Material To Be Classified As Resistance To Flammability.

Test Result:

The Nearest Distance From Burnt Area To The Frame Edge

Original (in)	3.7	3.5
	3.4	3.7
	3.4	3.8
	3.8	3.7

Interpretation Of Test Result:

Number Of Specimens Meet The Test Criterion: 8

This report is made solely on the basis of your instructions and/or information and materials supplied by you. It is not intended to be a recommendation for any particular course of action. Intertek does not accept a duty of care or any other responsibility on any person other than the client in regard to this report and only accepts liability to the client insofar as it expressly appears in the terms and conditions governing Intertek's provision of services to you. Intertek makes all examinations or measurements either visually or by means of equipment to the extent and as provided for in these terms and conditions. We have agreed to conduct the service on a diligent and careful basis and we do not accept any liability to you for any loss arising out of or in connection with this report, in contract, tort, by statute or otherwise, except in the event of our gross negligence or willful misconduct.

SP / Sample

Page 4 of 4



