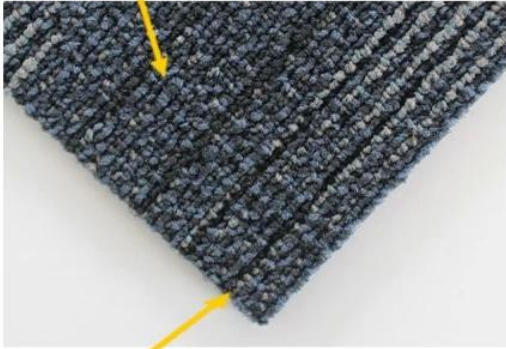


Item	Pile Material	Pile Height	Pile Weight	Back Material	Size
DK-NC50L	Nylon	2.5-5mm	560g/m2, 580g/m2	PVC	50x50cm
DK-PC50L	Polypropylene	3.5mm	560g/m2, 630g/m2	PVC	50x50cm

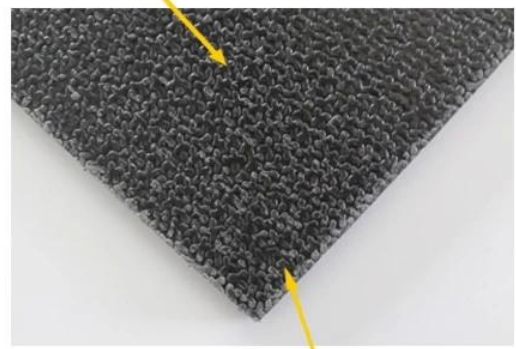
## DK-NC50L: Nylon Carpet Tile

*100% Polyamide / Nylon 6.6 Pile*



*Easy to clean. Dry quickly & Good wearability*

*High quality & Slip-resistant PVC backing*



*Waterproof. Oil-proof & Stain resistance*

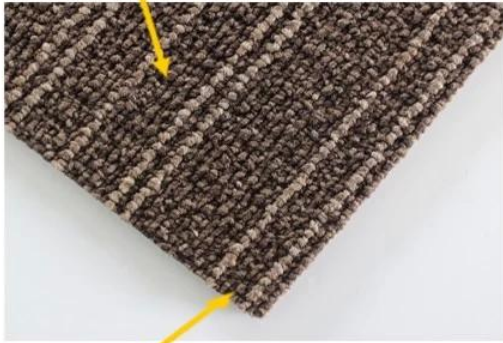


- Carpet Tile have been used in many commercial applications
- They can be replaced easily instead of having to clean the whole room
- Antistatic, Anti-bacterial, Mildew proof



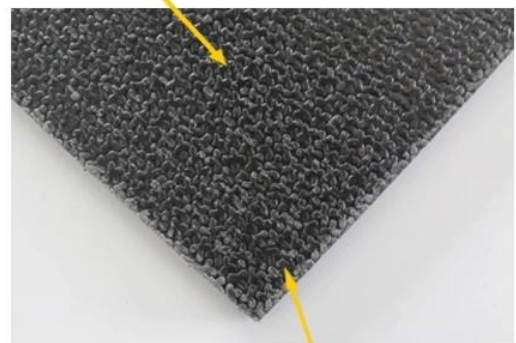
## DK-PC50L: Polypropylene Carpet Tile

*100% Polypropylene Loop Pile*



*Environmentally friendly & Colorfast*

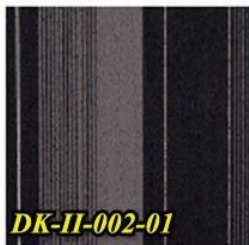
*High quality & Slip-resistant PVC backing*



*Waterproof. Oil-proof & Stain resistance*



- Easy to be replaced
- Antistatic, Anti-bacterial, Mildew proof
- Could be installed in both commercial and residential spaces
- With many styles and colors for choice



**DK-II-002-01**



**DK-II-001-07**



**DK-FP8006H1**

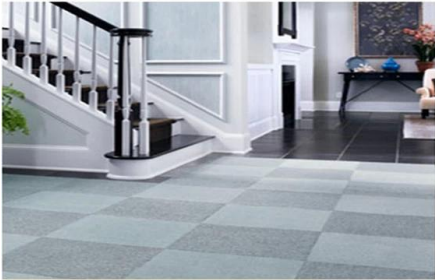


**DK-II-002-03**



**DK-II-002-04**

**Carpet Tile for Home Use:**



**Carpet Tile for Office Use:**



**Carpet Tile for Commercial Use:**



**Call**

**(86) 755 82132292**

*Or*

**Enquiry Now**

**for more style**