

Heutzutage ist die Trommel Instrument ist mehr und mehr populär. Wenn jedoch der Spieler zu zeigen ist, die Trommel case bewegen und sogar die großen Lärm.

Jetzt sind wir froh, empfehlen unsere Drum-Logo Matte zu Ihnen, was auf Probleme lösen kann. Inzwischen ist es ist auch eine gute Idee das Image des Unternehmens mit Ihrem eigenen Design zu fördern, die Kombination von die Vorteile einer Trommelbodenmatte mit einem auffälligen Design, das verbessern können Branding und Marketing-Bemühungen.

Drum Logo Mat:

A Business with no sign is a sign of No Business!

Pattern#1: Nylon Pile

Dyes are permanently injected deep into the nylon pile so that they will not "rub off"



Nylon Loop pile can absorb water effectively

Pattern#1: Non-woven Backing with Dot

Non-woven with dots makes mats more anti-slip



Overlocking can prevent surface peeling off.

- Make more comfortable and safe when playing the drum
- Non-woven backing covered with dots to avoid slidin
- Stylish and mutiple designs for your option

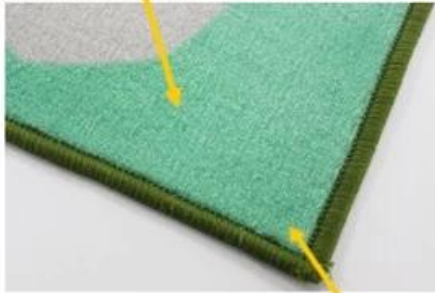


Drum Logo Mat:

A Business with no sign is a sign of No Business!

Pattern#2: Nylon Pile

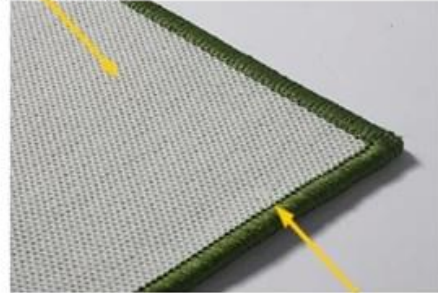
Dyes are permanently injected deep into the nylon pile so that they will not "rub off"



Nylon Loop pile can absorb water effectively

Pattern#2: Latex Backing

Latex Backing makes mats more anti-slip



Overlocking can prevent surface peeling off.

- Make more comfortable and safe when playing the drum
- Latex backing to avoid slidign
- Stylish and mutiple designs for your option



Drum Logo Mat:

A Business with no sign is a sign of No Business!

Pattern#3: Nylon Pile

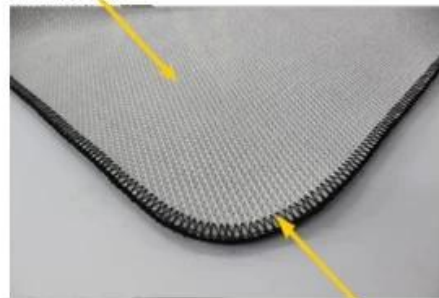
Dyes are permanently injected deep into the nylon pile so that they will not "rub off"



Nylon Loop pile can absorb water effectively

Pattern#3: TPR Backing

TPR Backing makes mats more anti-slip



Overlocking can prevent surface peeling off.

- Make more comfortable and safe when playing the drum
- TPR backing to avoid slidign
- Stylish and mutiple designs for your option



Certification:

ITTC

No. 390 Gongwen Road, Fengxian District Shanghai, China 201413

Test Report No. 26796010

Client Information:

Supplier No. 26000

Client Company Name: 26000

Contact Address: No. 110, Gongwen Road, Fengxian District, Shanghai, China

Client Contact Person: Li Changqin

WEA Contact Person: Kenneth

Sample Receive Date/Test Start Date: 25/09/13

Sample Information by applicant:

Article No. 802407089240709

Article Name: Bulging

Article Date Stamp: 1311

Material Producer: /

Material Description: /

Material Batch Number/Production Date: /

Test type: Production Test

Sample Color: Blue

Test Method:

Formaldehyde content in textile, ISO 14184-1
pH value in textile, ISO 3071

Lark Whitman
ITTC General Manager

The test report shall not be reproduced without the written approval of ITTC.

Test Report No. 26796010

No. 390 Gongwen Road, Fengxian District Shanghai, China 201413
Tel: (86-21) 5755 4800 Fax: (86-21) 5755 4819

Determination Of Formaldehyde (Refer To ISO 14184-1, AA-300792-4, ISO 180-0032, AA-707372-2, ISO 14184-1, 2011)

Formaldehyde content (mg/kg)		WEA Limit
Mean value	Not detectable	/
No.	1	2
Individual value	Not detectable	Not detectable

Remarks:

- The standard curve is performed within 24 hours.
- The concentration of formaldehyde stock solution is certified by Hach-Lange.

Determination Of pH Of Aqueous Extract (Refer To ISO 14184-1, AA-300792-4, ISO 180-0032, AA-707372-2, ISO 3071: 2005, extract by distilled water)

pH Value		WEA Limit
6.5		/

Temperature of extracting solution, t		24
pH of distilled water		6.18

End of Report

Test Report No. 26796010

Page 2 of 2

Formaldehyde content (mg/kg)

Not detectable

1

Not detectable

once a month

