



Make Your Own LOGO Mat

Pick the Colors

Measure the Size

Then go ahead >>

Kundenspezifische Anleitung

> Lange Dauerhaft Tintenstrahl Drucken Logo auf das Nylon Ballaststoff mit Anti-Rutsch Natürlich Gummi Unterstützung.

> Nein Einschränkung auf Designs, Farben & Größe.

> Perfekt Weg zu Fördern Ihre Unternehmen Bild.

&

> EIN Fußboden Matten mit ein Blickfang Design Das kann Verbessern Branding und Marketing Bemühungen.

> Beide zum Innen & Draussen Standorte

Sie haben 4 Möglichkeiten über die Nylon-Pfähle:

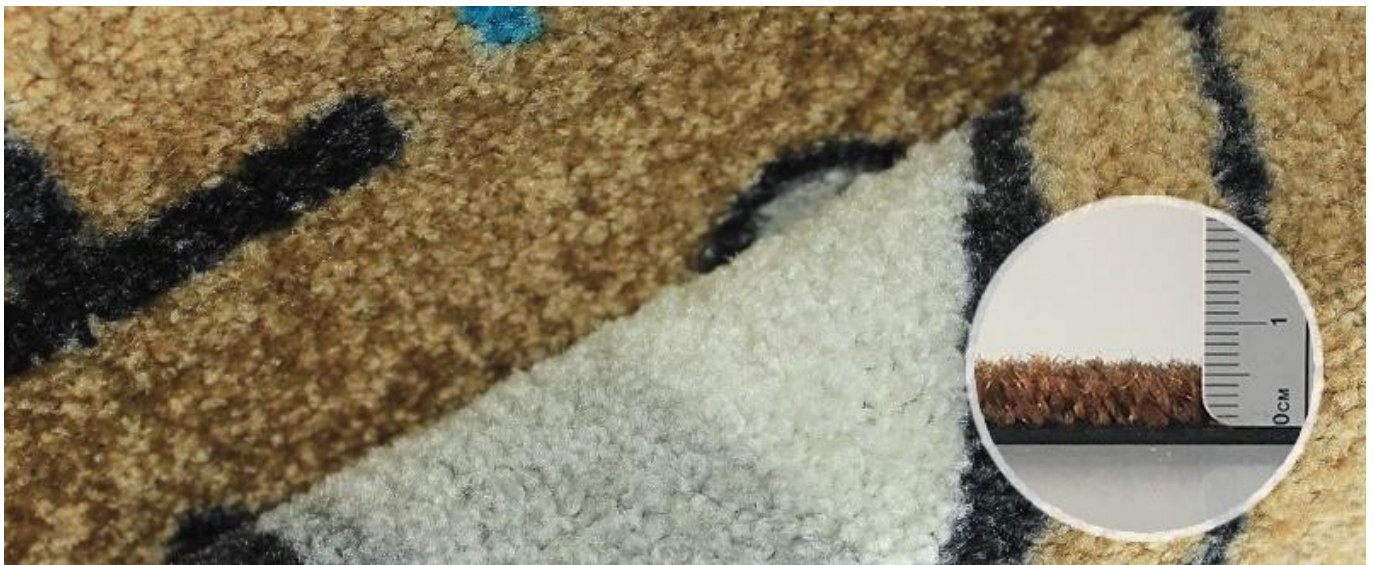
> Artikel# DK-2450: 3 mm / 450 g / m² Nylon + 2 mm / 2000 g / m²

Gummiunterlage

Wettbewerbsfähig Preis, Niedriger Haufen Höhe, Beste Wahl zum Kompliziert Design



& gt; Artikel# DK-2000: 4mm /600gsm Nylon + 2mm / 2000gsm Gummirückseite
Die meisten beliebt Artikel, Niedriger Twist Haufen, Beste Verkaufen zum UNS Markt



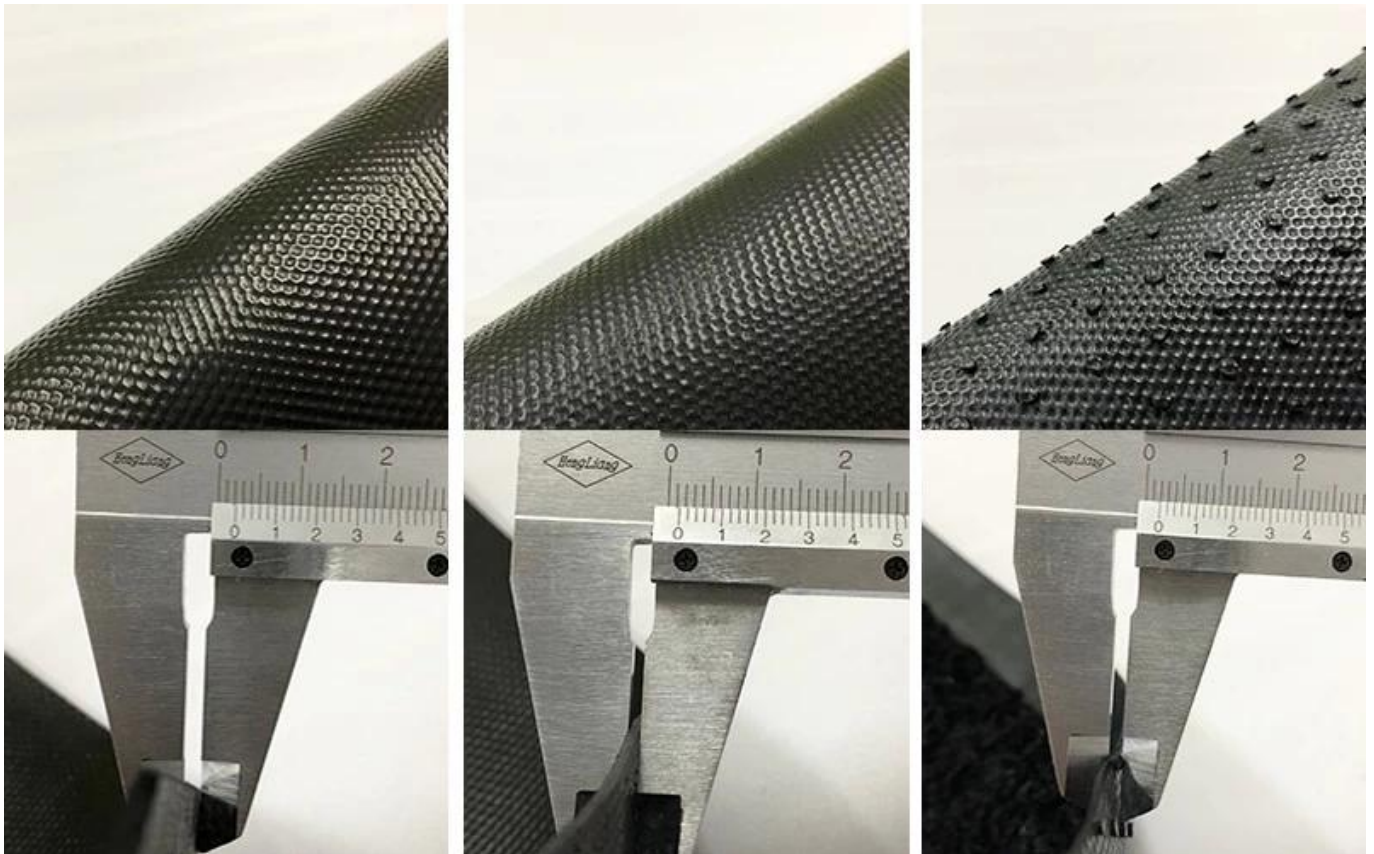
& gt; Artikel# DK-2200: 5mm /700gsm Nylon + 2mm / 2000gsm Gummirückseite
Höher Twist Haufen, Schwerer Pflicht Artikel zum Wahl



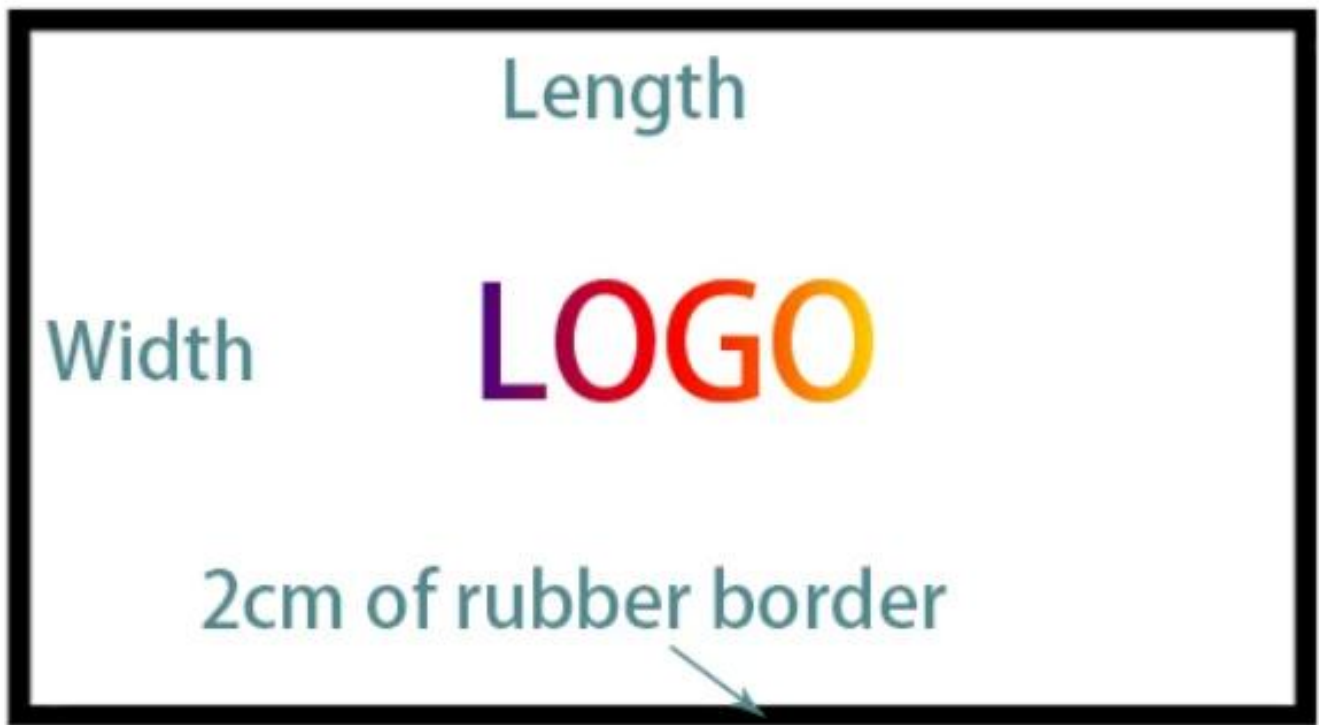
& gt; Artikel# DK-2300: 7mm / 950gsm Nylon + 2mm / 2000gsm Gummirückseite
Luxusgüter, Weich Dicker Haufen, auch der Preis ist höher



Drei Backings zur Auswahl:



Größen für die Wahl:



Die maximale Breite: 2m

Die maximale Länge: keine Begrenzung

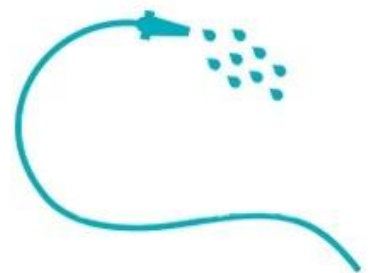
Beliebte Größen: 40x60cm, 46x74cm, 50x70cm, 50x80cm, 60x90cm, 80x120cm, 120x180cm, kundenspezifische Größen verfügbar.

Sie könnten beliebige Farben wählen:



Wie man die Matten reinigt:

1. Staubsaugen 2. Staubsaugen 3. Schlauch Aus Ccleaning 4. Kein Maschinenwaschen bitte.



Wie produzieren wir die Matten?



Sind unsere Matten sicher? Sicher!

SGS TEST REPORT
 No. : S29L121000440
 Date: Oct. 16, 2012
 Page: 1 of 2

SHENZHEN DUTTIUM HOUSEWARE PRODUCTS CO., LTD
 RM 607-608, NINGBO MACHINERY-ELECTRICAL BLDG. #7, BRIDA RD, SHENZHEN, CHINA 518029

The following sample(s) were submitted and identified on behalf of the client as:

Sample Name: RUBBER PRINTED MAT WITH RUBBER BACKING
 SGT Ref No: Q29M161010000
 Material: RUBBER-BACKING
 Spec: 60x90CM
 Manufacturer: SHENZHEN DUTTIUM HOUSEWARE PRODUCTS CO., LTD
 Test Performed: Selected tests as requested by applicant
 Date of Report: Oct. 11, 2012
 Test Period: Oct. 11, 2012 to Oct. 16, 2012

Test Results: Please refer to the following page(s):
 ~~~~~To be continued~~~~~

Signed for and on behalf of  
 SGT/CPC Lab  
*Zamber*  
 Senior L  
 Authorized Signatory

SGS 014225

**SGS TEST REPORT**  
 No. : S29L121000440  
 Date: Oct. 16, 2012  
 Page: 2 of 2

Test Information:  
 Sample description: See photo  
 Lab environment condition: 23±2°C, 50%RH

| No. | Test item        | Test method                         | Test condition                                              | Test result                 |
|-----|------------------|-------------------------------------|-------------------------------------------------------------|-----------------------------|
| 1   | Water absorption | ASTM D 1570-02<br>2005™ Procedure A | Specimen: 200x100x5mm<br>Environment condition: 23±2°C, 50% | 0.000g/cm²<br>(See table 1) |

Note: 1. Water absorption, g/m²; 2. Final water absorption; 3. Water absorption, g/m².

2. All test specimens were cut from the upper part.

3. The absorbed water content is by a 0.01 accuracy.

Photo:

SGS 014225

Tests Conducted (As Requested By The Applicant)

**3 Color Fastness To Washing (AATCC 61-2011, Test No. 2A, 45 Minutes Mechanical Wash At 120°F In 5-15% AATCC WDB Detergent Solution With 50 Steel Balls)**

|                |     |
|----------------|-----|
| Color Change   | 4   |
| Color Staining | 4.5 |
| -Acetate       | 4   |
| -Cotton        | 4.5 |
| -Nylon         | 4.5 |
| -Polyester     | 4.5 |
| -Acrylic       | 4.5 |
| -Wool          | 4.5 |

**2 Color Fastness To Cracking (AATCC 8-2007)**

|     |     |
|-----|-----|
| Dry | 4.5 |
| Wet | 4.5 |

**2 Color Fastness To Light (AATCC 16-2004, Option 3, Xenon-Arc Lamp)**

|                   |   |
|-------------------|---|
| 20 Hours Exposure | 4 |
| Grade             | 4 |

Tests Conducted (As Requested By The Applicant)

**4 Flammability Test For Carpets And Rugs (US CPSC 16 CFR Part 1631)**

The Apparatus And Methods Of Testing Were Those Described In 16 CFR Part 1631 Standard For The Surface Flammability Of Small Carpets And Rugs (FF2-72).

**Requirements**

- (1) Test Criteria:  
The Charred Portion Does Not Extend To Within One Inch Of The Edge Of The Hole In The Flaming Frame At Any Point.
- (2) Acceptance Criteria:  
At Least 7 Of The 8 Specimens Must Meet The Test Criteria For The Material To Be Classified As Resistance To Flammability.

**Test Result :**

The Nearest Distance From Burnt Area To The Frame Edge

|          |     |     |
|----------|-----|-----|
| Original | 3.7 | 3.5 |
| SD1      | 3.6 | 3.7 |
|          | 3.6 | 3.8 |
|          | 3.8 | 3.7 |

**Interpretation Of Test Result :**

Number Of Specimens Meet The Test Criteria: 8

This report is made solely on the basis of your instructions and/or information and materials supplied by you. It is not intended to be a recommendation for any particular course of action. Intertek also does not accept a duty of care or any other responsibility to any person other than the Client in respect of this report and only accepts liability to the Client insofar as it is expressly contained in the terms and conditions governing Intertek's provision of services to you. Intertek makes no warranties or representations other than those implied with respect to this report and as provided for in these terms and conditions. We have aimed to conduct the service on a diligent and careful basis and we do not accept any liability to you for any loss arising out of or in connection with this report, in contract, tort, by statute or otherwise, except in the event of our gross negligence or willful misconduct.

Wir Könnte Show Sie Etwas Matten Wir gemacht:



Andere Fragen, senden Sie uns einfach eine E-Mail oder rufen Sie uns an!