

Heutzutage ist die Trommel Instrument ist mehr und mehr populär. Wenn jedoch der Spieler zu zeigen ist, die Trommel case bewegen und sogar die großen Lärm.

Jetzt sind wir froh, empfehlen unsere Drum-Logo Matte zu Ihnen, was auf Probleme lösen kann. Inzwischen ist es ist auch eine gute Idee das Image des Unternehmens mit Ihrem eigenen Design zu fördern, die Kombination von die Vorteile einer Trommelbodenmatte mit einem auffälligen Design, das verbessern können Branding und Marketing-Bemühungen.

Drum Logo Mat:

A Business with no sign is a sign of No Business!

Pattern#1: Nylon Pile

Dyes are permanently injected deep into the nylon pile so that they will not "rub off"



Nylon Loop pile can absorb water effectively

Pattern#1: Non-woven Backing with Dot

Non-woven with dots makes mats more anti-slip



Overlocking can prevent surface peeling off.

- Make more comfortable and safe when playing the drum
- Non-woven backing covered with dots to avoid slidin
- Stylish and multiple designs for your option

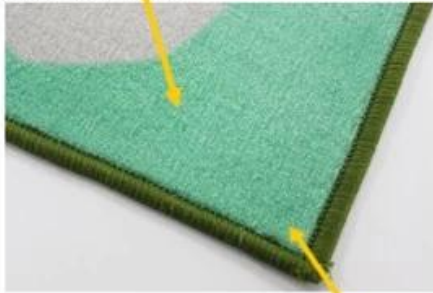


Drum Logo Mat:

A Business with no sign is a sign of No Business!

Pattern#2: Nylon Pile

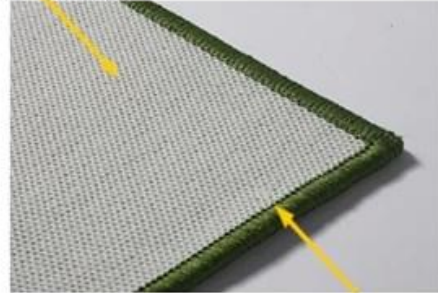
Dyes are permanently injected deep into the nylon pile so that they will not "rub off"



Nylon Loop pile can absorb water effectively

Pattern#2: Latex Backing

Latex Backing makes mats more anti-slip



Overlocking can prevent surface peeling off.

- Make more comfortable and safe when playing the drum
- Latex backing to avoid slidin
- Stylish and multiple designs for your option



Drum Logo Mat:

A Business with no sign is a sign of No Business!

Pattern#3: Nylon Pile

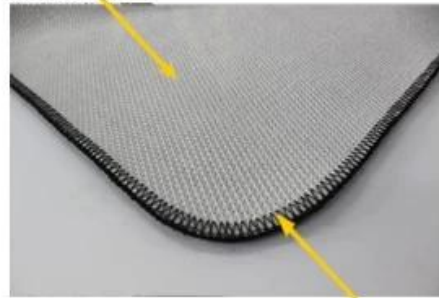
Dyes are permanently injected deep into the nylon pile so that they will not "rub off"



Nylon Loop pile can absorb water effectively

Pattern#3: TPR Backing

TPR Backing makes mats more anti-slip



Overlocking can prevent surface peeling off.

- Make more comfortable and safe when playing the drum
- TPR backing to avoid slidin
- Stylish and mutple designs for your option



Certification:

ITTC No.399 Gongwen Road, Fengxian District Shanghai, China 201413
Tel: (86-21) 3753 4800 Fax: (86-21) 3753 4819

Test Report No. 26796210

Client Information:
Supplier No. 0000
Client Company Name
Contact Address
Client Contact Person
WEA Contacts Person
Sample Receive Date/Test Start Date
Article No.
Article Name
Article Date Stamp
Material Producer
Material Description
Material Batch Number/Production Date
Test type
Sample Class

Determination Of Formaldehyde (Refer To ISO 14184-1:2013)

Formaldehyde content (mg/kg)		WEA Limit
Mean value		/
Not detectable		/
No.	1	2
Individual value		Not detectable
Not detectable		Not detectable

Remarks:
Value below 10 ppm is reported as 'Not detectable'.
The standard curve is performed once a month.
The concentration of formaldehyde stock solution is certified by Hach-Lange.

Determination Of pH Of Aqueous Extract (Refer To ISO 14184-1:2013, ISO 3071:2005, extract by distilled water)

pH Value		WEA Limit
6.5		/
Temperature of extracting solution, °C		24
pH of distilled water		6.18

Test Method:
Formaldehyde content in textile, ISO 14184-1
pH value in textile, ISO 3071

End of Report

Test Report No. 26796210 Page 2 of 2

Formaldehyde content (mg/kg)
Not detectable
1
Not detectable
once a month

