

Hoy en día, el tambor instrumento es más y más popular. Sin embargo, cuando el jugador está en exhibición, el tambor puede moverse e incluso caso de que el gran ruido.

Ahora estamos encantados de recomendar nuestro logotipo tapete de batería para usted, que puede resolver al problema. Mientras tanto, se También es una gran idea para promover la imagen de la empresa con su diseño personalizado, combinando los beneficios de una alfombra del piso del tambor con un diseño llamativo que puede mejorar de marca y los esfuerzos de marketing.

## Drum Logo Mat:

*A Business with no sign is a sign of No Business!*

### Pattern#1: Nylon Pile

Dyes are permanently injected deep into the nylon pile so that they will not "rub off"



Nylon Loop pile can absorb water effectively

### Pattern#1: Non-woven Backing with Dot

Non-woven with dots makes mats more anti-slip



Overlocking can prevent surface peeling off.

- Make more comfortable and safe when playing the drum
- Non-woven backing covered with dots to avoid slidin
- Stylish and mutiple designs for your option

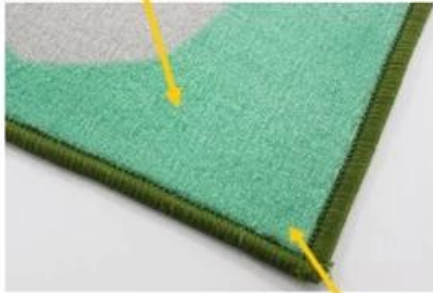


## Drum Logo Mat:

*A Business with no sign is a sign of No Business!*

### Pattern#2: Nylon Pile

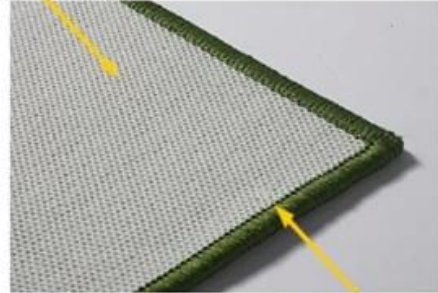
Dyes are permanently injected deep into the nylon pile so that they will not "rub off"



Nylon Loop pile can absorb water effectively

### Pattern#2: Latex Backing

Latex Backing makes mats more anti-slip



Overlocking can prevent surface peeling off.

- Make more comfortable and safe when playing the drum
- Latex backing to avoid slidin
- Stylish and multiple designs for your option



## Drum Logo Mat:

*A Business with no sign is a sign of No Business!*

### Pattern#3: Nylon Pile

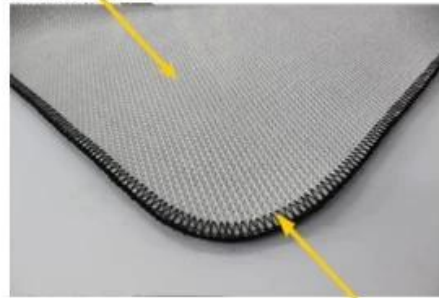
Dyes are permanently injected deep into the nylon pile so that they will not "rub off"



Nylon Loop pile can absorb water effectively

### Pattern#3: TPR Backing

TPR Backing makes mats more anti-slip



Overlocking can prevent surface peeling off.

- Make more comfortable and safe when playing the drum
- TPR backing to avoid slidin
- Stylish and mutple designs for your option



# Certification:

**ITTC** No.399 Gongwen Road, Fengxian District Shanghai, China 201413  
Tel: (86-21) 3753 4800 Fax: (86-21) 3753 4819

**Test Report No. 26796210**

**Client Information:**  
Supplier No. 0000  
Client Company Name  
Contact Address No. 110, Luchang Road, Guanglu, Shanghai  
Client Contact Person Li Chengxin  
WEA Contacts Person Kenneth  
Sample Receive Date/Test Start Date 25/09/13

**Sample Information by applicant:**  
Article No. 8024070892440709  
Article Name Bunting  
Article Date Stamp 1331  
Material Producer  
Material Description  
Material Batch Number/Production Date  
Test type Production Test  
Sample Class Blue

**Test Method:**  
Formaldehyde content in textile, ISO14184-1  
pH value in textile, ISO3071

Larry Whittam  
ITTC General Manager  
The test report shall not be reproduced without the written approval of ITTC.

Test Report No. 26796210

---

**ITTC** No.399 Gongwen Road, Fengxian District Shanghai, China 201413  
Tel: (86-21) 3753 4800 Fax: (86-21) 3753 4819

**Determination Of Formaldehyde (Refer To ISO 158-0007, AA-300792-4, IOS-PRG-0032, AA-707372-2, ISO 14184-1, 2013)**

Formaldehyde content (mg/kg)		WEA Limit
Mean value	Not detectable	/
No.	1	2
Individual value	Not detectable	Not detectable

Remarks:  
• The standard curve is performed within 24 hours.  
• The concentration of formaldehyde stock solution is certified by Hach-Lange.

Value below 10 ppm is reported as 'Not detectable'.

**Determination Of pH Of Aqueous Extract (Refer To ISO 158-0007, AA-300792-4, IOS-PRG-0032, AA-707372-2, ISO 3071: 2005, extract by distilled water)**

pH Value		WEA Limit
6.5		/
Temperature of extracting solution, °C	24	
pH of distilled water	6.18	

End of Report

Test Report No. 26796210 Page 2 of 2

Formaldehyde content (mg/kg)
Not detectable
1
Not detectable
once a month

