

□□, □□□□□ □□ □ □□□□□. □□□, □□□□□ □□ □□□□ □□□□ □ □□□ □□ □ □ □□□□.

□□ □□□ □□□□□□□ □□□ □□□ □□□□ □□□ □□ □□ □□□ □□□□□. □□, □□□□□□ □□ □□□ □□□ □□□□ □□ □ □□□ □□ □ □□□□ □□□□□□ □ □□□ □□ □□□□□ □□ □□ □□□□ □□ □□ □□□ □□□□□ □ □□□ □□.

Drum Logo Mat:

A Business with no sign is a sign of No Business!

Pattern#1: Nylon Pile

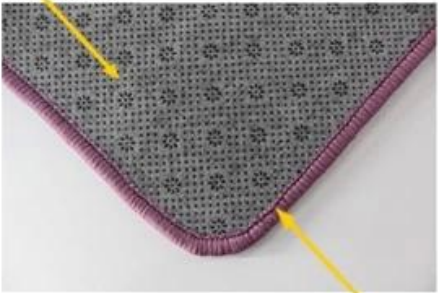
Dyes are permanently injected deep into the nylon pile so that they will not "rub off"



Nylon Loop pile can absorb water effectively

Pattern#1: Non-woven Backing with Dot

Non-woven with dots makes mats more anti-slip



Overlocking can prevent surface peeling off.

- Make more comfortable and safe when playing the drum
- Non-woven backing covered with dots to avoid slidign
- Stylish and multiple designs for your option



Drum Logo Mat:

A Business with no sign is a sign of No Business!

Pattern#2: Nylon Pile

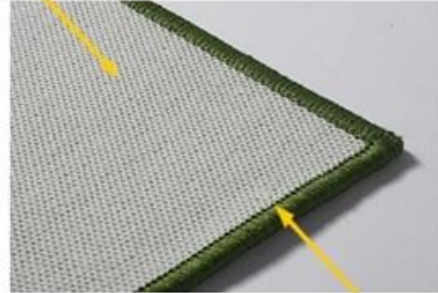
Dyes are permanently injected deep into the nylon pile so that they will not "rub off"



Nylon Loop pile can absorb water effectively

Pattern#2: Latex Backing

Latex Backing makes mats more anti-slip



Overlocking can prevent surface peeling off.

- Make more comfortable and safe when playing the drum
- Latex backing to avoid slidin
- Stylish and multiple designs for your option



Drum Logo Mat:

A Business with no sign is a sign of No Business!

Pattern#3: Nylon Pile

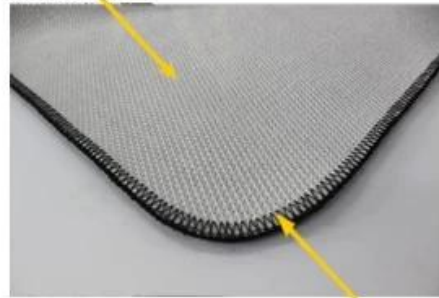
Dyes are permanently injected deep into the nylon pile so that they will not "rub off"



Nylon Loop pile can absorb water effectively

Pattern#3: TPR Backing

TPR Backing makes mats more anti-slip



Overlocking can prevent surface peeling off.

- Make more comfortable and safe when playing the drum
- TPR backing to avoid slidin
- Stylish and mutple designs for your option



Certification:

ITTC No.399 Gongwen Road, Fengxian District Shanghai, China 201413
Tel: (86-21) 3753 4800 Fax: (86-21) 3753 4819

Test Report No. 26796210

Client Information:
Supplier No. 0000
Client Company Name
Contact Address
Client Contact Person
WEA Contacts Person
Sample Receive Date/Test Start Date
Article No.
Article Name
Article Date Stamp
Material Producer
Material Description
Material Batch Number/Production Date
Test type
Sample Class

Determination Of Formaldehyde (Refer To ISO 14184-1:2013)

Formaldehyde content (mg/kg)		WEA Limit
Mean value		/
Not detectable		/
No.	1	2
Individual value		Not detectable
Not detectable		Not detectable

Remarks:

- Value below 10 ppm is reported as 'Not detectable'.
- The standard curve is performed once a month.
- The concentration of formaldehyde stock solution is certified by Hach-Lange.

Determination Of pH Of Aqueous Extract (Refer To ISO 14184-1:2013, ISO 3071:2005, extract by distilled water)

pH Value		WEA Limit
6.5		/
Temperature of extracting solution, t		24
pH of distilled water		6.18

Test Method:
Formaldehyde content in textile, ISO 14184-1
pH value in textile, ISO 3071

End of Report

Test Report No. 26796210 Page 2 of 2

Formaldehyde content (mg/kg)
Not detectable
1
Not detectable
once a month

