

- & gt; □ □□□ □□□ □□ □□ □□ □□ ...□ □□□ □□□ □ □□ □□ □□□□ □□ □□ □□.
- & gt; □□ □□ ...□ □□□, □□ □□ & □□.
- & gt; □□□ □□ □ □□ □□ □□ □□.
- & gt; □□ □□ □□ □ ~ □□ □□ □□□ □ □□□ □□□ □□□ □□ □□.
- & gt; □□ □□ ...□ □□ □□ & □ □□ □□



- & gt; □# DK-2450 : 3mm / 450gsm □□□ + 2mm / 2000gsm □□ □□□
- □□, □□ □□ □□ □□, □□□ □□ ...□ □□ □□□ □□□



- & gt; □# DK-2000: 4mm / 600gsm □□□ + 2mm / 2000gsm □□ □□
- □□ □□ □□, □□ □□ □□□□ □□, □□□ □□ ...□ □□ □□ □□



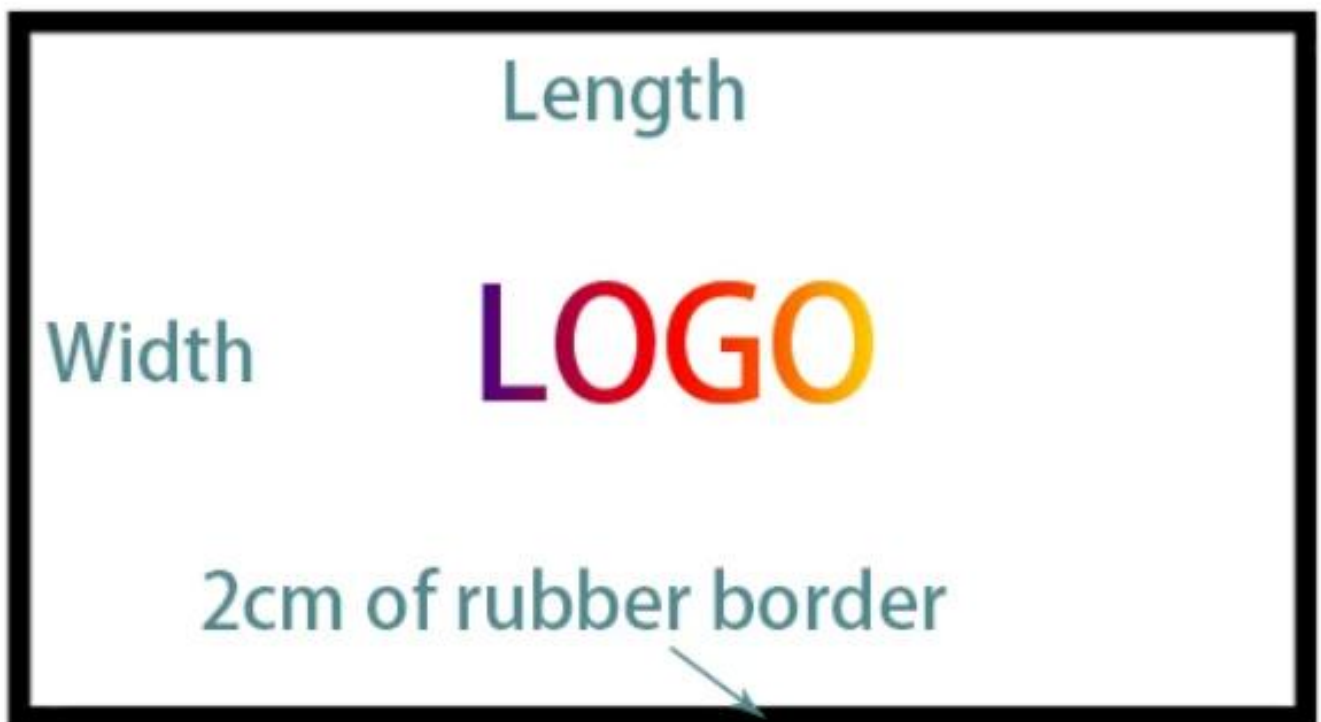
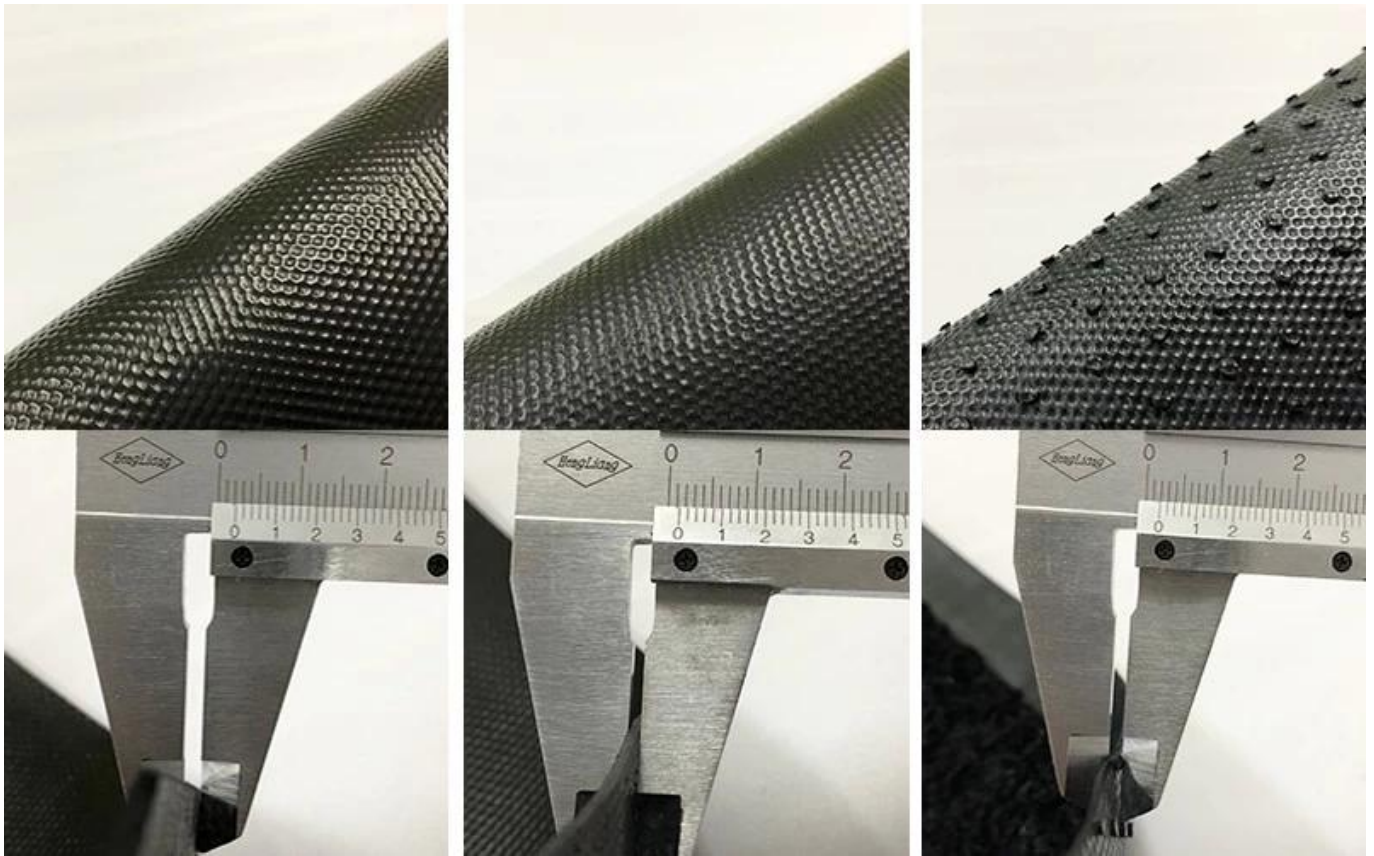
& gt; # DK-2200: 5mm / 700gsm 100% + 2mm / 2000gsm 100%
 100% 100% 100%, 100% 100% ... 100% 100%



& gt; # DK-2000: 7mm / 950gsm 100% + 2mm / 2000gsm 100%
 100%, 100% 100% 100%, 100% 100% 100%



100% 100% 100% 100% 100% 100% 100% :



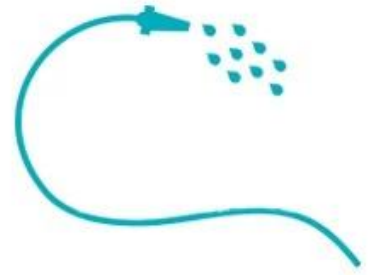
□□ □□ : 2m

M □□ □□ : □□ □□

□□□□ □□ : 40x60cm, 46x74cm, 50x70cm, 50x80cm, 60x90cm,
80x120cm, 120x180cm, □□□ □□ □□ □□□ □ □□□□.



1. □□□ □□□ □. 2. □□ □□□ 3. □□ 3. □□ □□ □□□□ □□□□ □□□□.



□ □ □ □ □ □ □ □ □ □ ?



Raw Material



Tufting



Artwork



Dye



Drying



Rinsing



Fixation



Printing



Cutting



Vulcanization



QC



Packing

□ □ □ □ □ □ □ □ ? □ □ □ !

TEST REPORT

No. : S2M12100048
 Date : Oct. 16, 2012
 Page: 1 of 2

SHENZHEN DICTOM HOUSEWARE PRODUCTS CO., LTD
 RM 607-608, NINGBO BUILDING ELECTRICAL BLDG. #7 BINGJIA RD, SHENZHEN, CHINA 51802

The following SAMPLES were submitted and identified on behalf of the client as:

Sample Name: NYLON PRINTED MAT WITH RUBBER BACKING
 SCS Ref No.: G2M12110000
 Material: NYLON-RUBBER
 Size: 60*100CM
 Manufacturer: SHENZHEN DICTOM HOUSEWARE PRODUCTS CO., LTD
 Test Performed by: Selected based on request by applicant
 Date of Request: Oct. 11, 2012
 Test Period: Oct. 11, 2012 to Oct. 15, 2012

Test Method: Please refer to the following legend:
 *****To be continued*****

Signed for and on behalf of
 SCS-CSTC Ltd

Name:
 Authorized Signatory



TEST REPORT

No. : S2M12100048
 Date : Oct. 16, 2012
 Page: 2 of 2

Test Information:

Sample description: See photo

Lab environment condition: 23±2°C, 50%RH±5%

No.	Test Item	Test method	Test condition	Test result
1	Water absorption	ASTM D 1976-02 (2002) Procedure A	Specimen: 200*100mm Green Immersion condition: 23±2°C, 50%	0.046g/cm ² (See table 1)

Note: 1. Water absorption, g/m²; 2. Final mass, water mass, initial dry weight;
 3. All test specimens were cut from the sample;
 4. The specimen was tested only by a SGS laboratory

Photo:



Test Report

Number: G2M100670223

Tests Conducted (As Requested By The Applicant)

1. Color Fastness To Washing (AATCC 61-2011), Test No. 24, 45 Minutes Mechanical Wash At 120°F In 0.15% AATCC WOB Detergent Solution With 50 Steel Balls

Color Change	4
Color Staining	4.5
-Acetate	4.5
-Cotton	4
-Nylon	4.5
-Polyester	4.5
-Acrylic	4.5
-Wool	4.5

2. Color Fastness To Crocking (AATCC 8-2007)

Dry	4.5
Wet	4.5

3. Color Fastness To Light (AATCC 16-2004, Option 3, Xenon-Arc Lamp)

20 Hours Exposure Grade	4
-------------------------	---

SP / Sample

Page 3 of 4

Test Report

Number: G2M100670223

Tests Conducted (As Requested By The Applicant)

4. Flammability Test For Carpets And Rugs (US CPSC 16 CFR Part 1631)

The Apparatus And Methods Of Testing Were Those Described In 16 CFR Part 1632 Standard For The Surface Flammability Of Small Carpets And Rugs (FF2-70).

Requirement

- Test Criterion:
The Charred Portion Does Not Extend To Within One Inch Of The Edge Of The Hole In The Flaming Frame At Any Point.
- Acceptance Criterion:
At Least 7 Of The 8 Specimens Must Meet The Test Criterion For The Material To Be Classified As Resistance To Flammability.

Test Result:

The Nearest Distance From Burnt Area To The Frame Edge

Original (in)	3.7	3.5
	3.4	3.7
	3.4	3.8
	3.8	3.7

Interpretation Of Test Result:

Number Of Specimens Meet The Test Criterion: 8

This report is made solely on the basis of your instructions and/or information and materials supplied by you. It is not intended to be a recommendation for any particular course of action. Intertek does not accept a duty of care or any other responsibility on any person other than the Client in respect of this report and only accepts liability to the Client under an expressly agreed written contract. Intertek's liability is limited to the amount of the fee for this report and is not intended to be a contract. We have acted in good faith and with care and we do not accept any liability to you for any loss arising out of or in connection with this report, in contract, tort, by statute or otherwise, except in the event of our gross negligence or willful misconduct.

SP / Sample

Page 4 of 4



