

Tegenwoordig is de trommelinstrument steeds populairder. Echter, wanneer de speler is op de tonen, de trommel kan bewegen en zelfs het geval dat de grote lawaai.

Nu zijn we blij omraden onze drum logo mat voor u, dat kan oplossen van problemen. Ondertussen is ook een goed idee om het bedrijf te promoten met uw eigen ontwerp, een combinatie van de voordelen van een trommel vloermat met een opvallend design dat kan verbeteren branding en marketing inspanningen.

Drum Logo Mat:

A Business with no sign is a sign of No Business!

Pattern#1: Nylon Pile

Dyes are permanently injected deep into the nylon pile so that they will not "rub off"



Nylon Loop pile can absorb water effectively

Pattern#1: Non-woven Backing with Dot

Non-woven with dots makes mats more anti-slip



Overlocking can prevent surface peeling off.

- Make more comfortable and safe when playing the drum
- Non-woven backing covered with dots to avoid sliding
- Stylish and multiple designs for your option

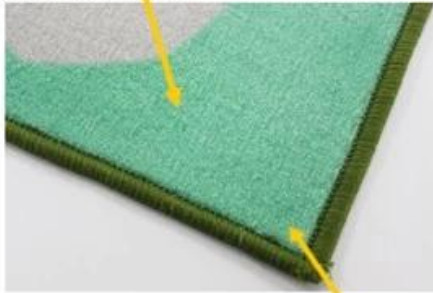


Drum Logo Mat:

A Business with no sign is a sign of No Business!

Pattern#2: Nylon Pile

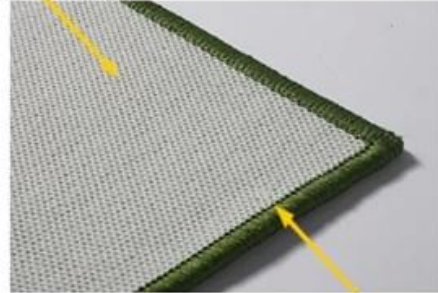
Dyes are permanently injected deep into the nylon pile so that they will not "rub off"



Nylon Loop pile can absorb water effectively

Pattern#2: Latex Backing

Latex Backing makes mats more anti-slip



Overlocking can prevent surface peeling off.

- Make more comfortable and safe when playing the drum
- Latex backing to avoid slidin
- Stylish and multiple designs for your option



Drum Logo Mat:

A Business with no sign is a sign of No Business!

Pattern#3: Nylon Pile

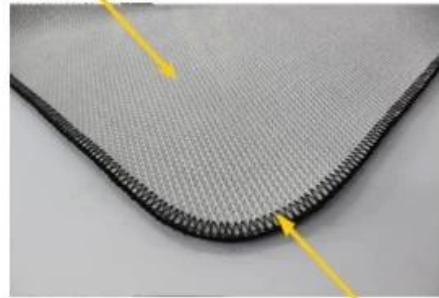
Dyes are permanently injected deep into the nylon pile so that they will not "rub off"



Nylon Loop pile can absorb water effectively

Pattern#3: TPR Backing

TPR Backing makes mats more anti-slip



Overlocking can prevent surface peeling off.

- Make more comfortable and safe when playing the drum
- TPR backing to avoid slidin
- Stylish and mutple designs for your option



Certification:

ITTC No.399 Gongwen Road, Fengxian District Shanghai, China 201413
Tel: (86-21) 3753 4800 Fax: (86-21) 3753 4819

Test Report No. 26796210

Client Information:
Supplier No. 0000
Client Company Name
Contact Address No. 110, Longyang Road, Shanghai, Shanghai
Client Contact Person Li Chengxin
WEA Contacts Person Kenneth

Sample Receive Date/Test Start Date 25/09/13

Sample Information by applicant:
Article No. 8024070892440709
Article Name Bunting
Article Date Stamp 1331
Material Production
Material Description
Material Batch Number/Production Date
Test type Production Test
Sample Class Blue

Test Method:
Formaldehyde content in textile, ISO14184-1
pH value in textile, ISO3071

Larry Whittam
ITTC General Manager
The test report shall not be reproduced without the written approval of ITTC.

Test Report No. 26796210

ITTC No.399 Gongwen Road, Fengxian District Shanghai, China 201413
Tel: (86-21) 3753 4800 Fax: (86-21) 3753 4819

Determination Of Formaldehyde (Refer To ISO 159-0007, AA-300792-4, ISO-PHG-0032, AA-707372-2, ISO 14184-1, 2013)

| Formaldehyde content (mg/kg) | | WEA Limit |
|------------------------------|----------------|----------------|
| Mean value | Not detectable | / |
| No. | 1 | 2 |
| Individual value | Not detectable | Not detectable |

Remarks:
• The standard curve is performed within 24 hours.
• The concentration of formaldehyde stock solution is certified by Hach-Lange.

Determination Of pH Of Aqueous Extract (Refer To ISO 159-0007, AA-300792-4, ISO-PHG-0032, AA-707372-2, ISO 3071: 2005, extract by distilled water)

| pH Value | | WEA Limit |
|--|------|-----------|
| | 6.5 | / |
| Temperature of extracting solution, °C | 24 | |
| pH of distilled water | 6.18 | |

End of Report

Test Report No. 26796210 Page 2 of 2

| |
|------------------------------|
| Formaldehyde content (mg/kg) |
| Not detectable |
| 1 |
| Not detectable |
| once a month |

