



## Make Your Own LOGO Mat

*Pick the Colors*

*Measure the Size*

*Then go ahead >>*

## Customized Instruction

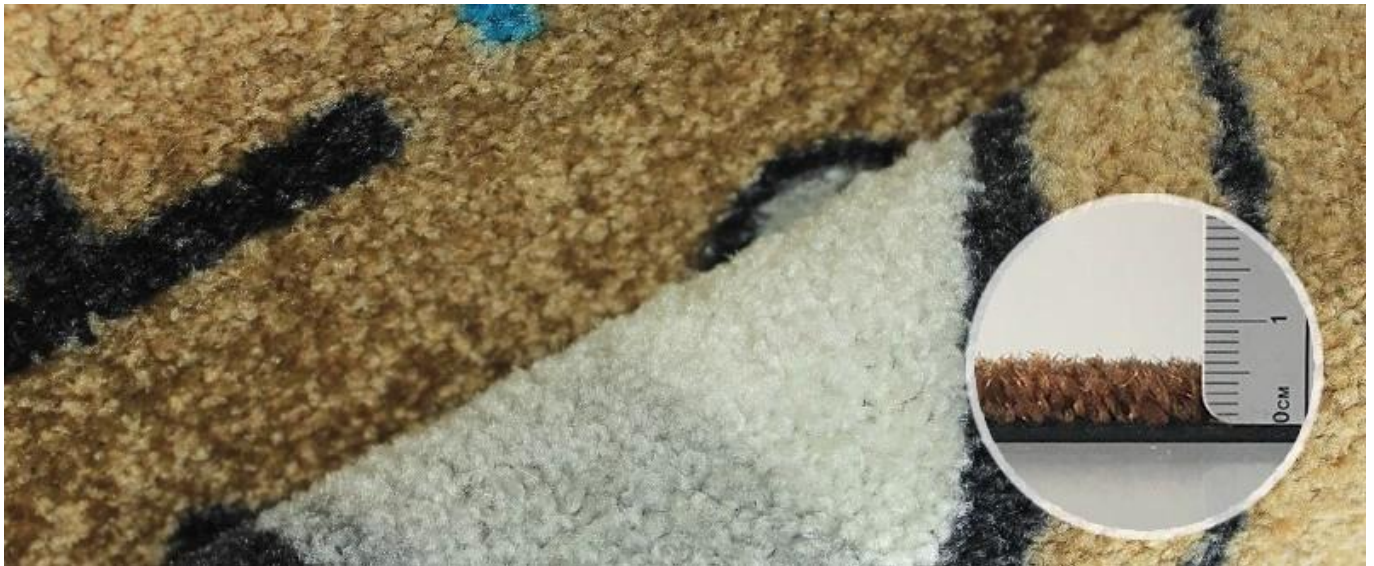
- > Long Lasting Inkjet Printing Logo on the Nylon Fiber with Antislip Natural Rubber Backing.
- > No Limitation on Designs, Colors & Size.
- > Perfect Way to Promote Your Company Image.
- > A Floor Mats with an Eye-Catching Design that can Enhance Branding and Marketing Efforts.
- > Both for Indoor & Outdoor Locations

## You Have 4 Choices about the Nylon Piles:

- > **Item# DK-2450: 3mm/450gsm Nylon + 2mm/2000gsm Rubber Backing**  
**Competitive Price, Lower Pile Height, Best Choice for Complicated Designs**



- > **Item# DK-2000: 4mm/600gsm Nylon + 2mm/2000gsm Rubber Backing**  
**Most Popular Items, Lower Twist Pile, Best Sell for U.S Market**



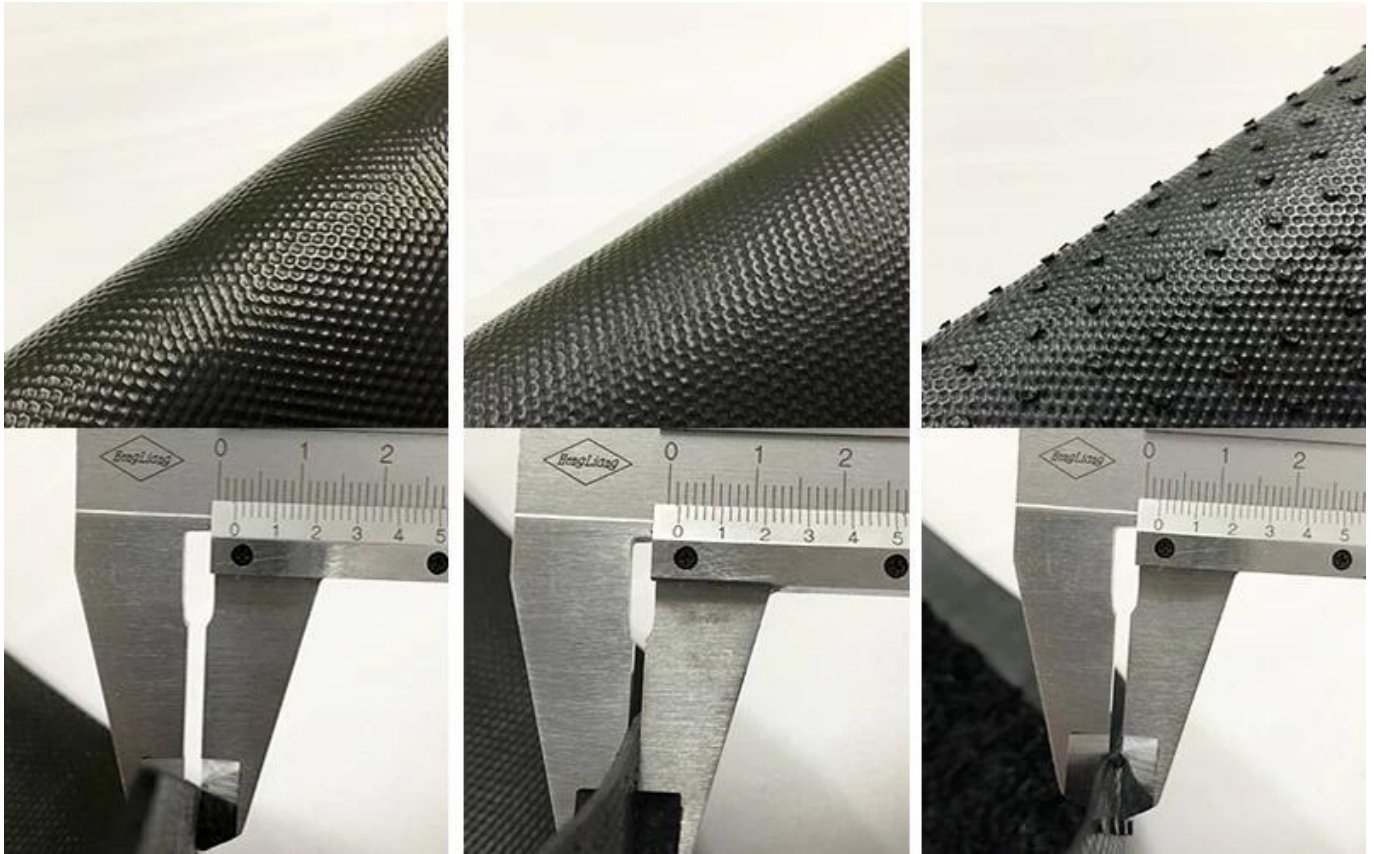
> Item# DK-2200: 5mm/700gsm Nylon + 2mm/2000gsm Rubber Backing  
Higher Twist Pile, Heavier Duty Item for Choice



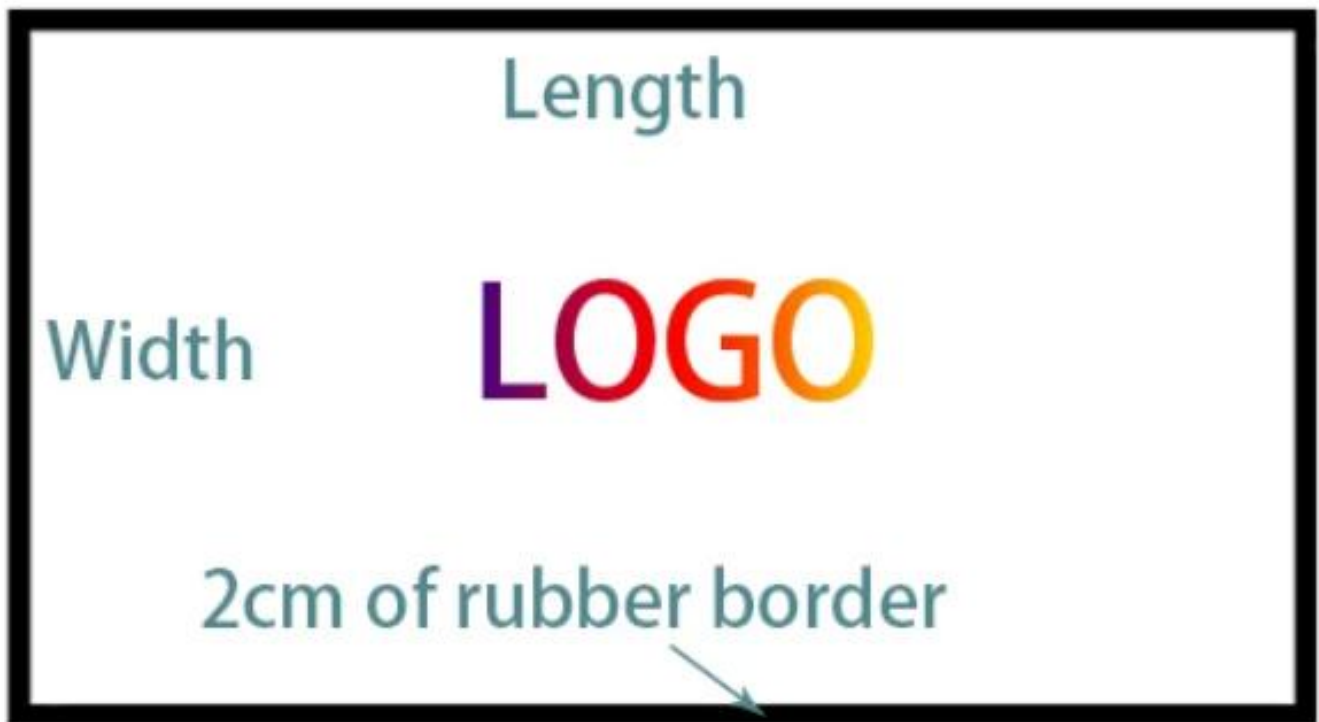
> Item# DK-2300: 7mm/950gsm Nylon + 2mm/2000gsm Rubber Backing  
Luxury Items, Soft Thick Pile, Also the Price is Higher too



Three Backings for Choice:



## Sizes for Choice:



The Maximal Width: 2m

The Maximal Length: no limit

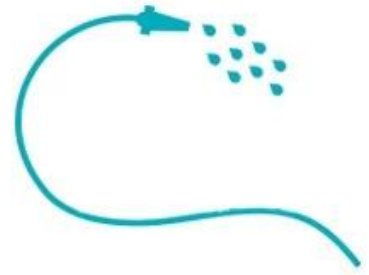
Popular Sizes: 40x60cm, 46x74cm, 50x70cm, 50x80cm, 60x90cm, 80x120cm, 120x180cm, customized Sizes Available.

You Could Choose Any Colors:



How to Clean the Mats:

1. Shake the Mats 2. Vacuum Clean 3. Hose Off Cleaning 4. No machine washing pls.



## How We Produce the Mats?



Does Our Mats Safe? Sure!

SHENZHEN DICTUM HOUSEWARE PRODUCTS CO., LTD  
RM 607-608, NINGBO BUILDING ELECTRICAL BLDG. #7 BINGJIA RD, SHENZHEN, CHINA 51802

The following samples were submitted and identified on behalf of the client as:

Sample Name: MAT/ON-PRINTED MAT WITH RUBBER BACKING  
SGS Ref No.: GZHT12100646  
Material: MAT/ON-RUBBER  
Spec: 60x90CM  
Manufacturer: SHENZHEN DICTUM HOUSEWARE PRODUCTS CO., LTD  
Test Performed as requested by applicant  
Date of Request: Oct. 11, 2012  
Test Period: Oct. 11, 2012 to Oct. 15, 2012

Test Method: Please refer to the following legend:  
\*\*\*\*\*To be continued\*\*\*\*\*

Signed for and on behalf of  
SGS-CSTC Ltd  
*Zamber*  
Kambor  
Authorized Signatory



Test Information:  
Sample description: See photo  
Lab environment condition: 23±2°C, 50%RH

| No. | Test Item        | Test method                                       | Test condition  | Test result                             |
|-----|------------------|---|---|---|
| 1   | Water absorption | ASTM D 1570-02<br>(2008) <sup>1</sup> Procedure A | Specimen: 200x100mm Green<br>Environmental condition: 23±2°C, 50%RH | 0.000g/cm <sup>2</sup><br>(See table 1) |

Note: 1. Water absorption, g/m<sup>2</sup>. 2. Final mass, ambient temperature, initial dry weight.  
3. All test specimens were cut from the sample.  
4. The absorbent was carried out by a 100% absorbent.

Photo:



Tests Conducted (As Requested By The Applicant)

1. Color Fastness To Washing (AATCC 61-2011), Test No. 24, 45 Minutes Mechanical Wash At 120°F In 0.15% AATCC WOB Detergent Solution With 50 Steel Balls

|                |     |
|----------------|-----|
| Color Change   | 4   |
| Color Staining | 4.5 |
| -Acetate       | 4.5 |
| -Cotton        | 4   |
| -Nylon         | 4.5 |
| -Polyester     | 4.5 |
| -Acrylic       | 4.5 |
| -Wool          | 4.5 |

2. Color Fastness To Crocking (AATCC 8-2007)

|     |     |
|-----|-----|
| Dry | 4.5 |
| Wet | 4.5 |

3. Color Fastness To Light (AATCC 16-2004, Option 3, Xenon-Arc Lamp)

|                         |   |
|-------------------------|---|
| 20 Hours Exposure Grade | 4 |
|-------------------------|---|

Tests Conducted (As Requested By The Applicant)

4. Flammability Test For Carpets And Rugs (US CPSC 16 CFR Part 1631)

The Apparatus And Methods Of Testing Were Those Described In 16 CFR Part 1633 Standard For The Surface Flammability Of Small Carpets And Rugs (FF3-F2).

Requirement:

- Test Criterion:  
The Charred Portion Does Not Extend To Within One Inch Of The Edge Of The Hole In The Flaminging Frame At Any Point.
- Acceptance Criterion:  
At Least 7 Of The 8 Specimens Must Meet The Test Criterion For The Material To Be Classified As Resistance To Flammability.

Test Result:

The Nearest Distance From Burnt Area To The Frame Edge

| Original (in) | Result |
|---------------|--------|
| 3.7           | 3.5    |
| 3.4           | 3.7    |
| 3.4           | 3.8    |
| 3.8           | 3.7    |

Interpretation Of Test Result:

Number Of Specimens Meet The Test Criterion: 8

This report is made solely on the basis of your instructions and/or information and materials supplied by you. It is not intended to be a recommendation for any particular course of action. Intertek does not accept a duty of care or any other responsibility on any person other than the Client in regard to this report and only accepts liability to the Client insofar as it expressly appears in the terms and conditions governing Intertek's provision of services to you. Intertek makes no warranties or representations, either explicit or implied, with respect to this report and its validity for its intended use and conditions. We have agreed to conduct the Service on a global and transferable basis and we do not accept any liability to you for any loss arising out of or in connection with this report, in contract, tort, by statute or otherwise, except in the event of our gross negligence or willful misconduct.

We Could Show You Some Mats We made:



Any Other Questions, Just Send Us Email or Make a Call☐