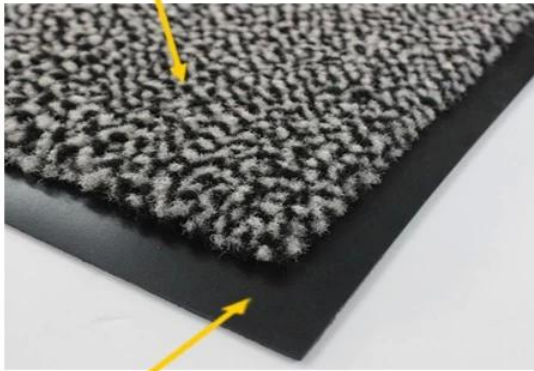


Item	Pile Material	Pile Weight	Pile Thickness	Back Material	Back Weight	Back Thickness
DK-5100C	Polypropylene	500g/m <sup>2</sup>	5mm	PVC	2400g/m <sup>2</sup>	1.4mm
DK-5200C	Polyester	550g/m <sup>2</sup>	5mm	PVC	2800g/m <sup>2</sup>	1.6mm
DK-5300C	30% Polyester 70% Cotton	650g/m <sup>2</sup>	6mm	PVC	2400g/m <sup>2</sup>	1.4mm
DK-5400C	Nylon	850g/m <sup>2</sup>	8mm	PVC	3100g/m <sup>2</sup>	1.8mm
DK-2680S	Nylon	680g/m <sup>2</sup>	5mm	Nitrile Rubber	1800g/m <sup>2</sup>	1.2mm

# DK-5200C: Polyester Door Mat

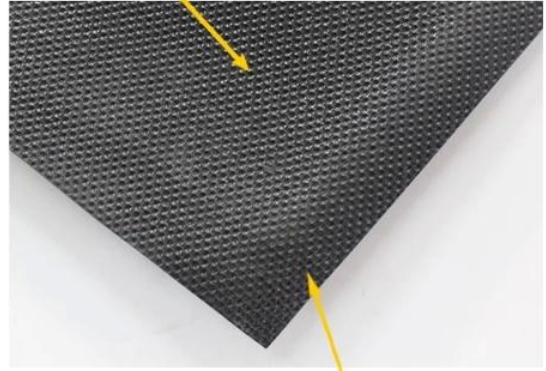
commercial entrance mat

Polyester cut-pile fiber



Drainable borders

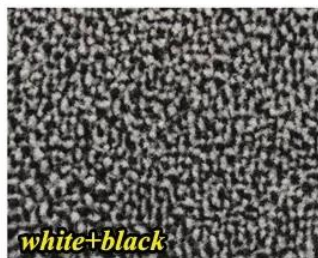
1.6mm PVC backing



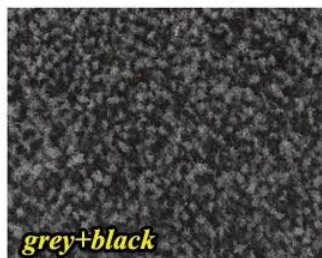
Antislip design to keep the mat on place



- Cut pile fabric construction
- Custom size is available
- Filters dirt and moisture away from the mat surface
- Recommended for use in grocery stores, airports, educational facilities



white+black



grey+black



brown+black



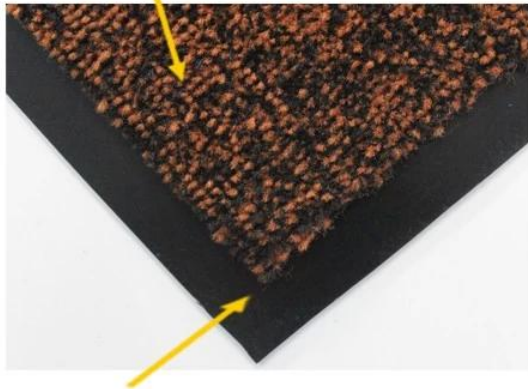
red+black



## DK-5100C: Polypropylene Door Mat

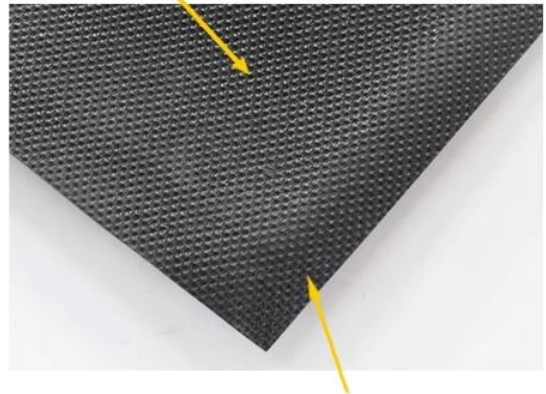
*economic mat for shop*

Polypropylene cut-pile fiber



Drainable borders

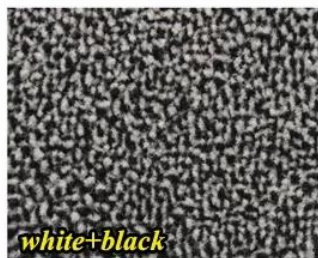
1.4mm PVC backing



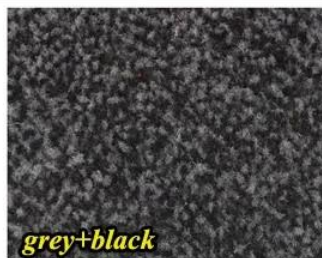
Antislip design to keep the mat on place



- Cut pile fabric construction
- Custom size is available
- Filters dirt and moisture away from the mat surface
- Economic item for shops and stores



*white+black*



*grey+black*



*brown+black*



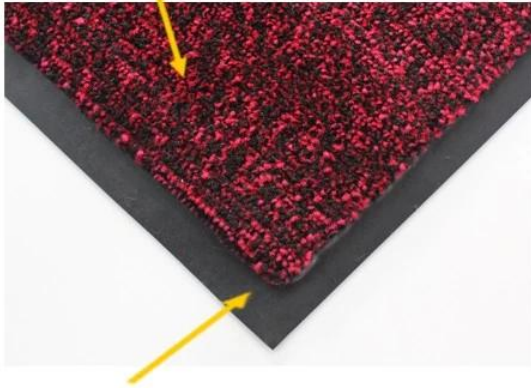
*red+black*



## DK-5300C: Cotton Door Mat

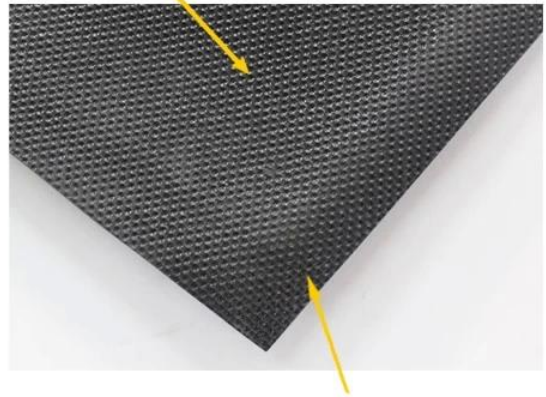
softer, comfortable mat

30% Polyester & 70% Cotton fiber



Drainable borders

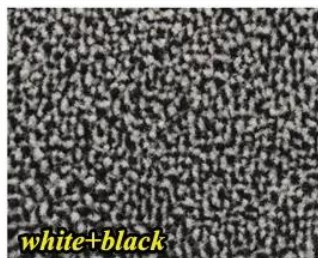
1.4mm PVC backing



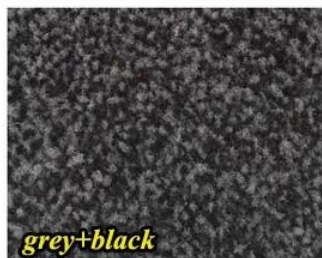
Antislip design to keep the mat on place



- 30% Polyester & 70% Cotton pile make the mat softer and more comfortable
- Custom size is available
- Filters dirt and moisture away from the mat surface
- Ideal for indoor and outdoor use



white+black



grey+black



brown+black



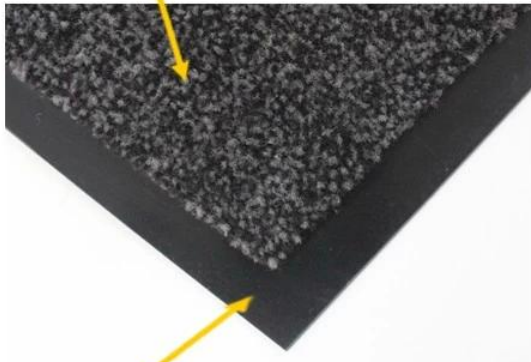
red+black



## DK-5400C: Nylon Door Mat

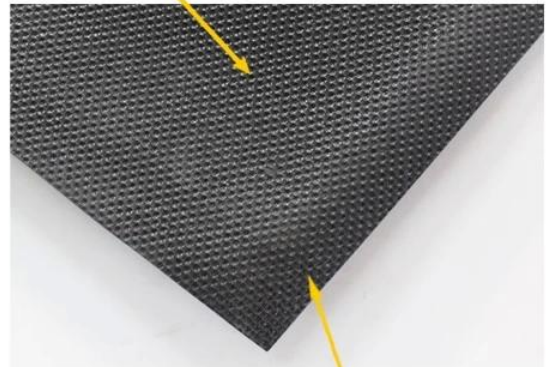
heavy duty, high traffic mat

8mm heavy duty nylon surface



Drainable borders

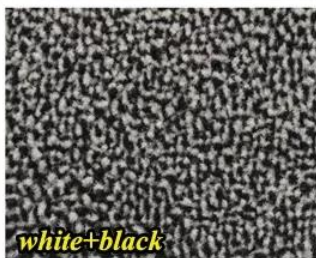
1.8mm PVC backing



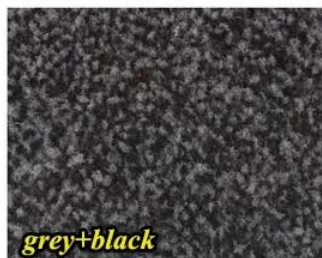
Antislip design to keep the mat on place



- Heavy nylon pile creates the ultimate wiping surface
- Custom size is available
- Filters dirt and moisture away from the mat surface
- Recommended for use in Class A buildings or any high traffic entrance way



white+black



grey+black



brown+black



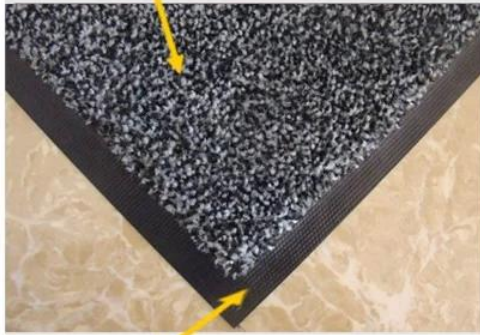
red+black



## DK-2680S: Solution-dyed Nylon Carpet

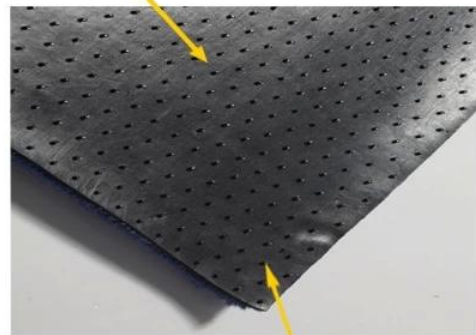
*heavy, double thick wiper mat*

Excellent scraping and wiping solution-dyed nylon fiber



Drainable borders

Oil and grease resistant 100% Nitrile rubber backing



Cleated backing for placement on carpet  
Smooth backing for hard floor



- Solution dyed nylon face will not fade over time
- Excellent scraping and wiping action for maximum soil stopping power
- Recommended for commercial buildings, hotels, restaurants, healthcare facilities, office buildings



*blue+black*



*brown+black*



*dark grey + black*



*light grey+black*



*red+black*