

В настоящее время, барабан инструмент становится все более и более популярным. Тем не менее, когда игрок находится на показе, барабан может двигаться и даже случай большой шум.

Теперь мы рады рекомендовать наш логотип барабан коврик для вас, которые могут решить на проблемы. В то же время, это это также отличная идея для продвижения имиджа компании с вашим собственным дизайном, сочетая преимущества коврик барабан пола с дизайном выделяющийся, который может повисить брендинг и маркетинговые усилия.

## Drum Logo Mat:

*A Business with no sign is a sign of No Business!*

### Pattern#1: Nylon Pile

Dyes are permanently injected deep into the nylon pile so that they will not "rub off"



Nylon Loop pile can absorb water effectively

### Pattern#1: Non-woven Backing with Dot

Non-woven with dots makes mats more anti-slip



Overlocking can prevent surface peeling off.

- Make more comfortable and safe when playing the drum
- Non-woven backing covered with dots to avoid slidign
- Stylish and mutiple designs for your option



## Drum Logo Mat:

*A Business with no sign is a sign of No Business!*

### Pattern#2: Nylon Pile

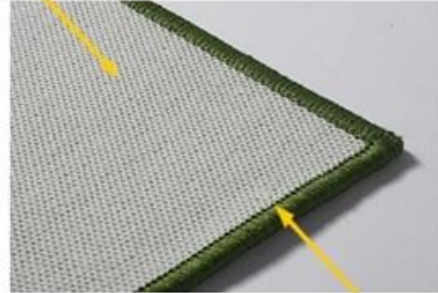
Dyes are permanently injected deep into the nylon pile so that they will not "rub off"



Nylon Loop pile can absorb water effectively

### Pattern#2: Latex Backing

Latex Backing makes mats more anti-slip



Overlocking can prevent surface peeling off.

- Make more comfortable and safe when playing the drum
- Latex backing to avoid slidin
- Stylish and multiple designs for your option



## Drum Logo Mat:

*A Business with no sign is a sign of No Business!*

### Pattern#3: Nylon Pile

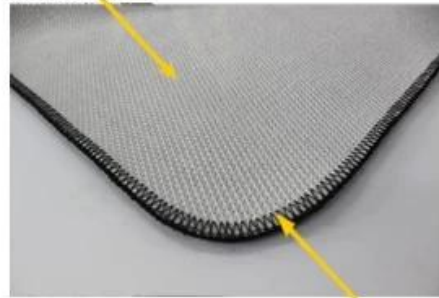
Dyes are permanently injected deep into the nylon pile so that they will not "rub off"



Nylon Loop pile can absorb water effectively

### Pattern#3: TPR Backing

TPR Backing makes mats more anti-slip



Overlocking can prevent surface peeling off.

- Make more comfortable and safe when playing the drum
- TPR backing to avoid slidin
- Stylish and mutple designs for your option



# Certification:

**ITTC** No.399 Gongwen Road, Fengxian District Shanghai, China 201413  
Tel: (86-21) 3753 4800 Fax: (86-21) 3753 4819

**Test Report No. 26796210**

**Client Information:**  
Supplier No. 0000  
Client Company Name  
Contact Address No. 110, Luchang Road, Guanglu, Shanghai  
Client Contact Person Li Chengyu  
WEA Contacts Person Kenneth  
Sample Receive Date/Test Start Date 25/09/13

**Sample Information by applicant:**  
Article No. 8024070892440709  
Article Name Bunting  
Article Date Stamp 1331  
Material Producer  
Material Description  
Material Batch Number/Production Date  
Test type Production Test  
Sample Class Blue

**Test Method:**  
Formaldehyde content in textile, ISO14184-1  
pH value in textile, ISO3071

Larry Whittam  
ITTC General Manager  
The test report shall not be reproduced without the written approval of ITTC.

Test Report No. 26796210

---

**ITTC** No.399 Gongwen Road, Fengxian District Shanghai, China 201413  
Tel: (86-21) 3753 4800 Fax: (86-21) 3753 4819

**Determination Of Formaldehyde (Refer To ISO 159-0007, AA-300792-4, IOS-PRG-0032, AA-707372-2, ISO 14184-1, 2013)**

Formaldehyde content (mg/kg)		WEA Limit
Mean value	Not detectable	/
No.	1	2
Individual value	Not detectable	Not detectable

Remarks:  
• The standard curve is performed within 24 hours.  
• The concentration of formaldehyde stock solution is certified by Hach-Lange.

• Value below 10 ppm is reported as 'Not detectable'.

**Determination Of pH Of Aqueous Extract (Refer To ISO 159-0007, AA-300792-4, IOS-PRG-0032, AA-707372-2, ISO 3071: 2005, extract by distilled water)**

pH Value		WEA Limit
	6.5	/
Temperature of extracting solution, °C	24	
pH of distilled water	6.18	

End of Report

Test Report No. 26796210 Page 2 of 2

Formaldehyde content (mg/kg)
Not detectable
1
Not detectable
once a month

